

ADDENDUM THREE

Addendum Three (AD.03) to the drawings and specifications prepared by Gibraltar Design for **Early Learning Center (ELC) and Alternative Learning Center (ALC) Additions and Renovations** for Tippecanoe School Corporation, Lafayette, Indiana.

All Contractors bidding on this project shall read all of the items covered below and shall comply with all of the requirements as set forth, including any necessary refinements or additions generated by this Addendum and required by the intent of the original contract documents. All Contractors shall acknowledge on their bid form that they have received this Addendum and previous Addendums One and Two and include the appropriate content of same within their bid proposal.

SPECIFICATIONS

1. Specification Section 06 20 00

Rough Carpentry

A. Add paragraph 2.7 to read:

"2.7 Slider Window Unit

A. Provide and install aluminum slider window, Boyd Aluminum Manufacturing Window, Model Series 700, horizontal sliding unit, or approved equal.

B. Install slider window into gypsum board opening – refer to drawings for location and size required."

2. Specification Section 08 41 00

Aluminum Storefronts

A. Paragraph 2.6 A2, revise text to read:

"2. Early Learning Center: 1 mil thick, 70 percent Kynar 500 or Hylar 5000 type finish, over minimum 0.2 mil baked-on modified epoxy primer; of color to match medium bronze anodized finish selected by the Architect."

3. Specification Section 08 71 00

Door Hardware – Early Learning Center

A. Paragraph 3.05.D revise Hardware Set #18 to read:

Hardware Group No. 18

A-139A

Provide each PR door(s) with the following:

QTY		DESCRIPTION	CATALOG NUMBER	FINISH	MFR
2	EA	CONT. HINGE	112XY EPT	628	IVE
2	EA	POWER TRANSFER	EPT10	689	VON
1	EA	KEYED REMOVABLE MULLION	KR4954 STAB	689	VON
1	EA	ELEC PANIC HARDWARE	CDSI-LXRX-LC-99-NL-OP-110MD	626	VON
1	EA	ELEC PANIC HARDWARE	CDSI-RX-99-EO	626	VON
1	EA	MULLION STORAGE KIT	MT54	689	VON
3	EA	MORTISE CYL HOUSING (SFIC)	80-110 (W/ DISP CONST CORE)	626	SCH
1	EA	RIM CYL HOUSING (SFIC)	80-159 (W/ KEYED CONST CORE)	626	SCH
4	EA	PERMANENT CORE	MATCH EXISTING KEY SYSTEM	626	
1	EA	ELECTRIC STRIKE	6300 FSE 12/24 VAC/VDC	630	VON
2	EA	90 DEG OFFSET PULL	8190EZHD 12" O	630-316	IVE
2	EA	SURFACE CLOSER	4040XP SCUSH	689	LCN
2	EA	MOUNTING PLATE	4040XP-18PA AS REQ'D	689	LCN
2	EA	CUSH SHOE SUPPORT	4040XP-30 AS REQ'D	689	LCN
2	EA	BLADE STOP SPACER	4040XP-61 AS REQ'D	689	LCN
1	EA	MULLION SEAL	8780NBK	BK	ZER
1	EA	WEATHER STRIPPING	BY DOOR/FRAME SUPPLIER		
2	EA	DOOR SWEEP	39A	A	ZER
1	EA	THRESHOLD	655A	A	ZER
1	EA	FIRST RESPONDER CREDENTIAL READER	BY ACCESS CONTROL PROVIDER		
1	EA	CREDENTIAL READER	BY ACCESS CONTROL PROVIDER		
2	EA	DOOR CONTACT	679-05HM	BLK	SCE
1	EA	POWER SUPPLY	PS904 900-2RS [COORDINATE WITH ACCESS CONTROL PROVIDER]		VON
1	EA	DIAGRAM	ELEVATION		DLR
1	EA	DIAGRAM	POINT TO POINT		DLR

OPERATION: DOOR NORMALLY CLOSED AND LOCKED. DOORS CAN BE LEFT UNLOCKED AS PROGRAMMED BY ACCESS CONTROL.

LOCKED HOURS: VALID CREDENTIAL/FIRST RESPONDER CREDENTIAL MOMENTARILY RELEASES ELECTRIC STRIKE ALLOWING ENTRY. DOOR CONTACT TO MONITOR DOOR

POSITION. RX SWITCH IN EXIT DEVICE PUSH PAD SHUNTS DOOR CONTACTS FOR VALID EGRESS. FREE EGRESS AT ALL TIMES.

4. Specification Section 12 32 16**Plastic Laminate Casework**

- A. Change paragraph 2.2.1.6.a1 to read, "Polycarbonate".

5. Specification Section 22 31 00**Domestic Water Softeners**

- A. Revise paragraph 2.01.D.1 to read as follows: "Softener tank shall be of sufficient size to allow for a proper freeboard space above the resin bed for adequate expansion of the resin during backwashing.

6. Specification Section 23 00 07**Mechanical Insulation**

- A. Revise paragraph 2.04.A.3 to read as follows: Supply Air Ductwork located in attic spaces shall be internally lined and externally insulated.
- B. Revise paragraph 2.04.A.4 to read as follows: Return Air Ductwork located in attic space shall be internally lined and externally insulated.

DRAWINGS

Early Learning Center Drawings**7. Sheet A-101**

- A. Refer to revised, full-size drawing, included in this Addendum, for revisions.
 - 1. Modify swings of doors A-107, A117A, A-124, A-135, A-138, A-140, and A-143.

8. Sheet A-710

- A. Refer to revised, full-size drawing, included in this Addendum, for revisions.
 - 1. Shower Threshold Detail: Change marble threshold to solid surface.

9. Sheet EL101

- A. Refer to revised, full-size drawing, included in this Addendum, for revisions.

10. Sheets EP101 and EP102

- A. Refer to revised, full-size drawing, included in this Addendum, for revisions.

11. Sheets E501 and E502

- A. Refer to revised, full-size drawing, included in this Addendum, for revisions.

12. Sheet E601

- A. Refer to revised, full-size drawing, included in this Addendum, for revisions.

Alternative Learning Center Drawings**13. Sheet A-601**

- A. Refer to revised, full-size drawing, included in this Addendum, for revisions.
 - 1. Change Door A-124B to Type 2 Door.

14. Sheet A-710

A. Refer to revised, full-size drawing, included in this Addendum, for revisions.

1. Shower Threshold Detail: Change marble threshold to solid surface.

15. Sheet E101

A. Refer to revised, full-size drawing, included in this Addendum, for revisions.

16. Sheet E501

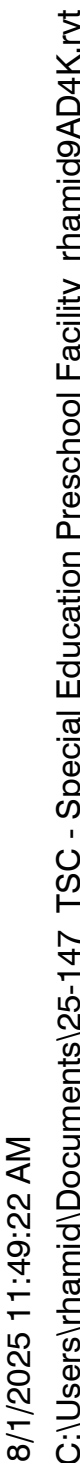
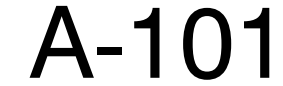
A. Refer to revised, full-size drawing, included in this Addendum, for revisions.

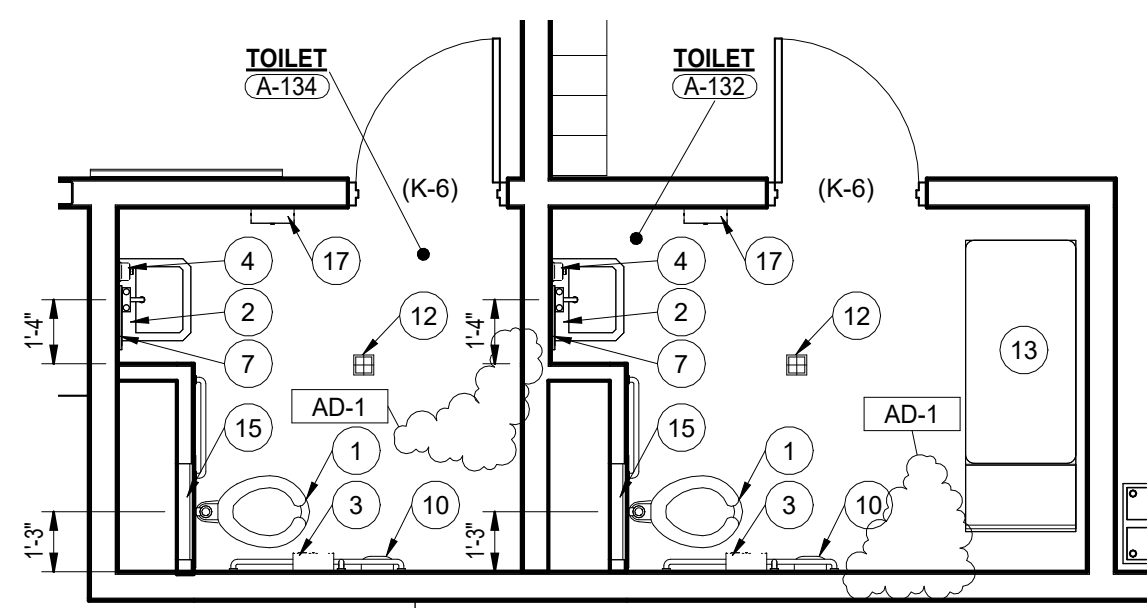
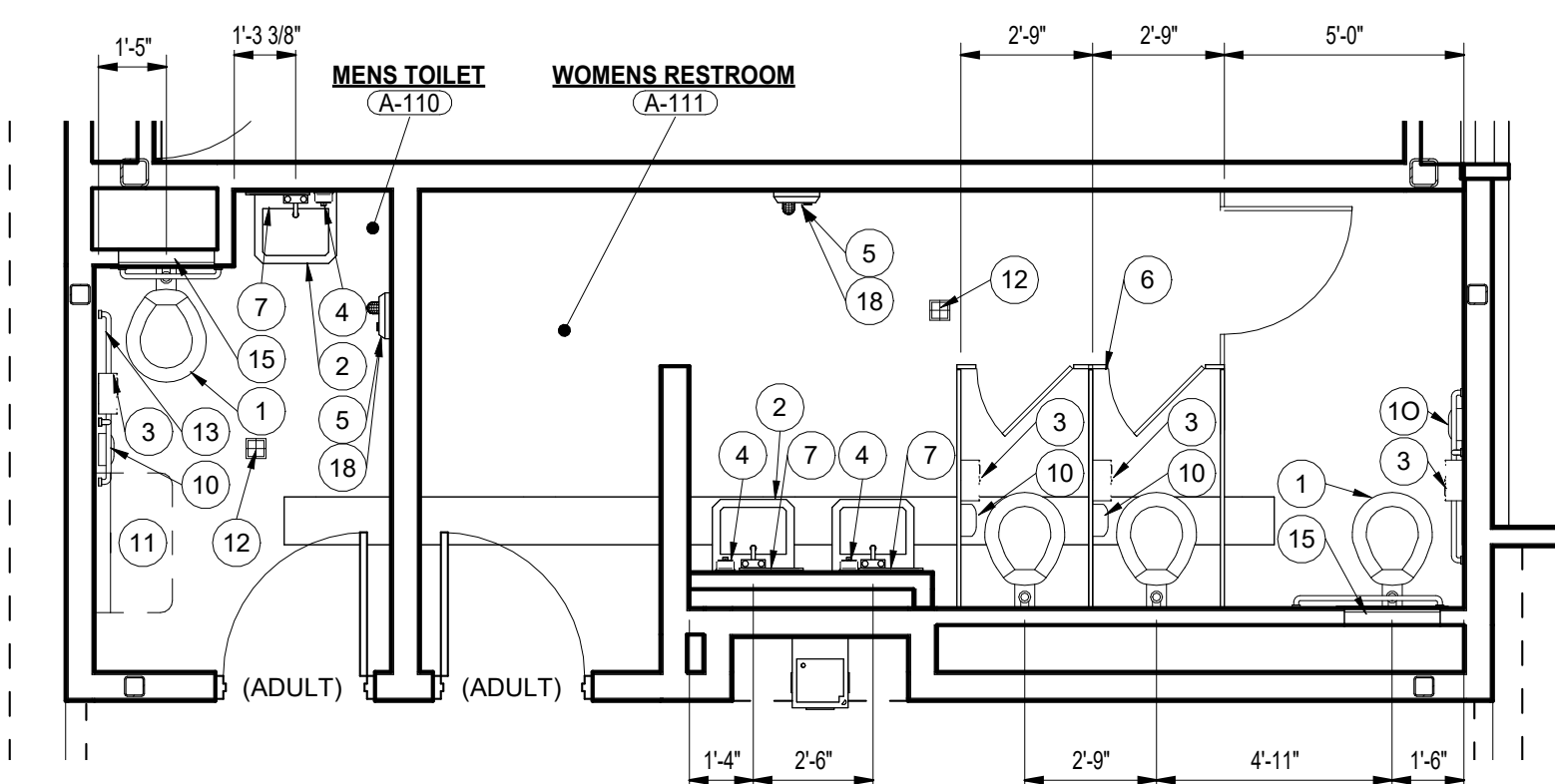
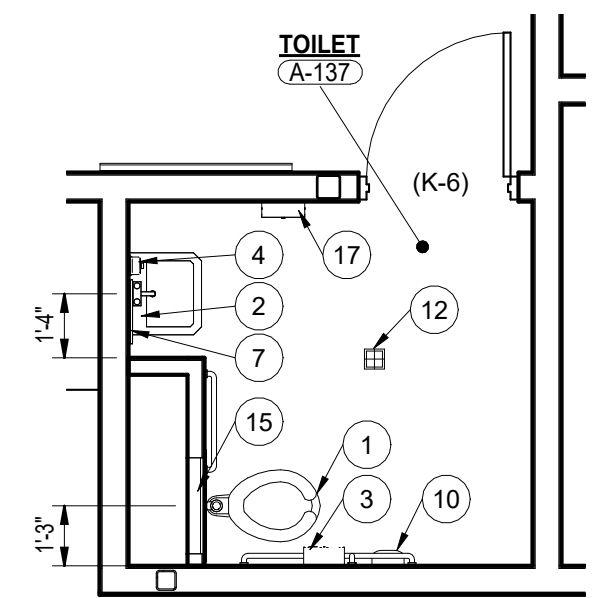
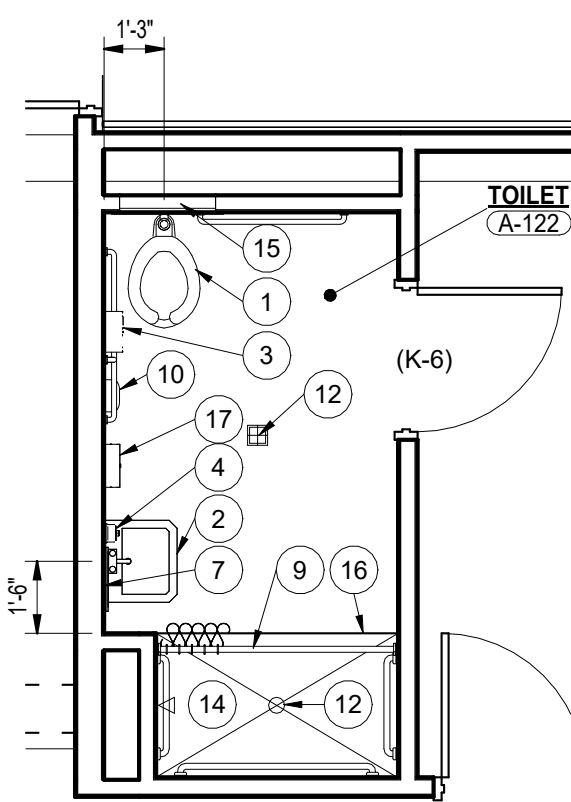
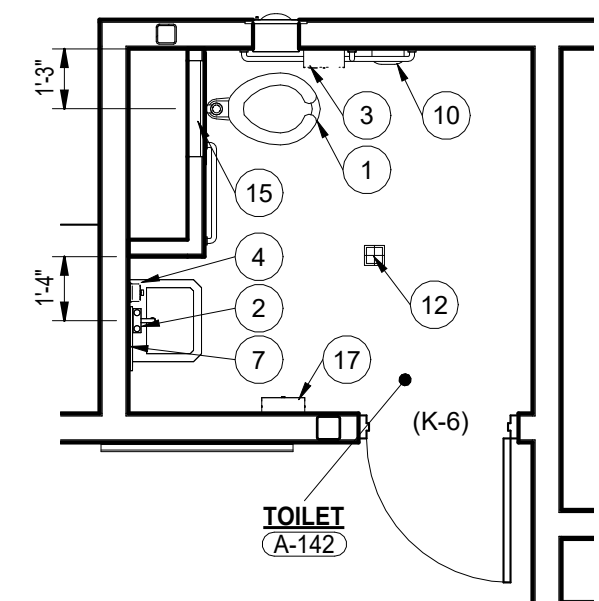
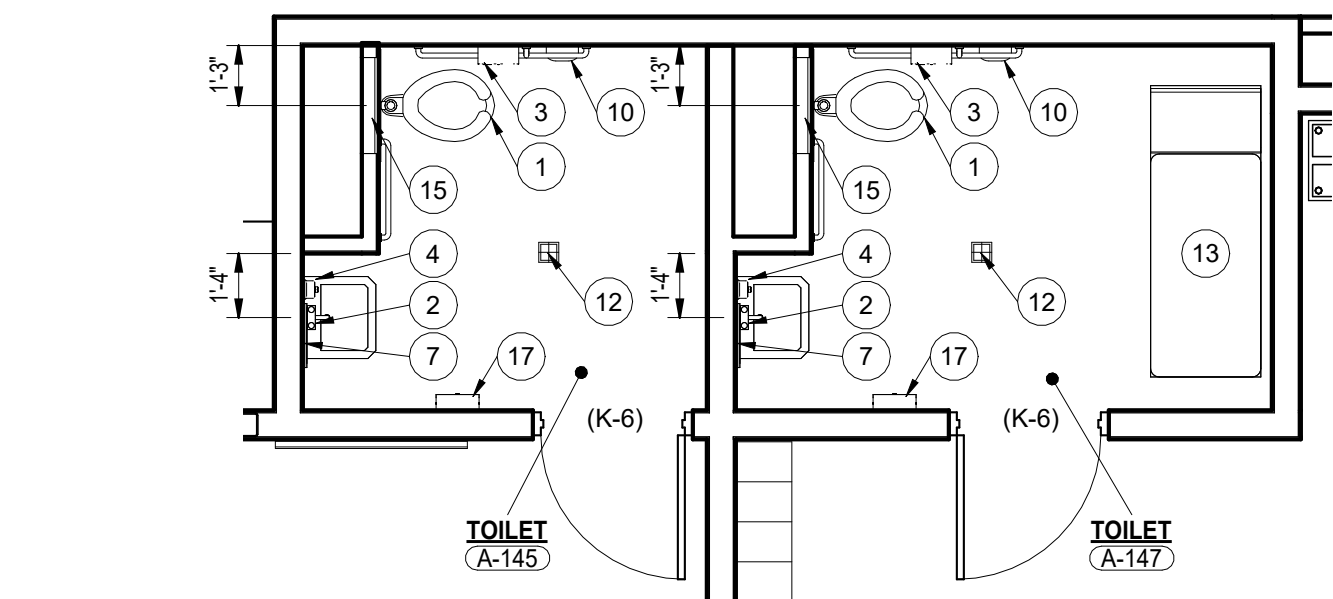
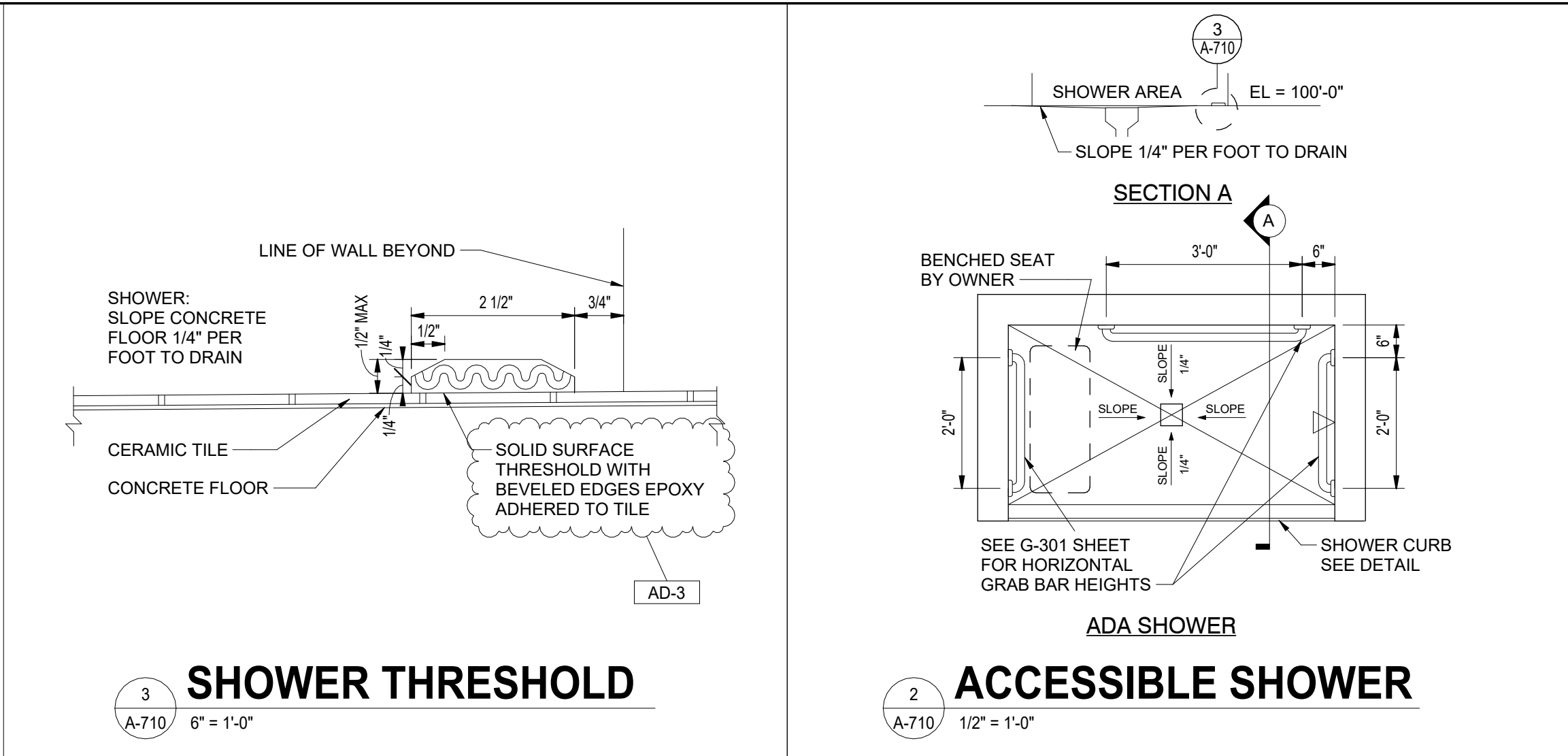
Pages 1 through 4, inclusive, and Twelve (12) Full-Size Drawings, constitute the total makeup of **Addendum Three**.



Y:\25-147 Tippecanoe SC - Special Ed Pre-School Facility\Specs\AD03 AD03.doc

- FOR GENERAL PROJECT NOTES, MATERIAL INDICATIONS LEGEND, SYMBOL
LEGEND, ABBREVIATIONS, ETC., REFER TO G SERIES SHEETS.
- PLAN DIMENSIONS TO MASONRY WALLS ARE TO FACE OF ROUGH MASONRY.
PLAN DIMENSIONS TO STUD WALLS ARE TO FACE OF FINISHED GYPSUM
BOARD OR PLASTER. PLAN DIMENSIONS TO STUD WALLS WITH CERAMIC TILE
FINISH ARE TO THE FACE OF THE BACKER BOARD.
- ALL CMU WALLS THAT DO NOT LAY IN FULL OR HALF LENGTHS SHOULD
BE BALANCED, SO AS NOT TO HAVE ANY PIECES LESS THAN 4" IN SIZE
EXPOSED TO VIEW.
- MASONRY WALLS BEARING ON A THICKENED SLAB AT SLAB DEPRESSIONS
REQUIRE CUT MASONRY UNITS SO THAT COURSING BEGINS AT THE
FLOOR LINE.
- THE BASE FIRST FLOOR ELEVATION INDICATED FOR THE PROJECT IS 100'-0".
REFER TO SITE PLAN FOR CORRELATION TO USGS DATUM.
- HINGE SIDE OF DOOR JAMB AT GYPSUM BOARD WALLS SHALL BE LOCATED 4"
MINIMUM FROM ADJACENT WALL UNLESS NOTED OTHERWISE.
- PROVIDE WOOD BLOCKING (OR METAL STRAPPING WHERE APPLICABLE) AS
REQUIRED WITHIN METAL STUD WALLS FOR WALL MOUNTED ITEMS.
- REFER TO LIFE SAFETY PLANS REGARDING FIRE RATED WALL LOCATIONS AND
OTHER CODE INFORMATION.
- INTERIOR CMU WALLS ARE TO BE RUNNING BOND UNLESS NOTED
OTHERWISE.
- REFER TO FINISH PLANS FOR LOCATION AND EXTENT OF FINISHED FLOOR
AND WALL MATERIAL.
- REFER TO DEMOLITION SHEETS FOR ADDITIONAL PATCHING AND REPAIR
WORK.
- REFER TO FINISH PLANS FOR INTERIOR ELEVATIONS, LOCATION AND EXTENT
OF FINISHED FLOOR AND WALL MATERIAL.
- REFER TO EQUIPMENT PLANS FOR CASEWORK, DISPLAY BOARDS, LOCKERS,
AND OTHER ADDITIONAL TYPICAL EQUIPMENT NOTES AND INFORMATION.
- REFER TO EQUIPMENT PLANS FOR REFERENCE TO ENLARGED TOILET ROOM
PLANS AND TOILET ACCESSORIES.



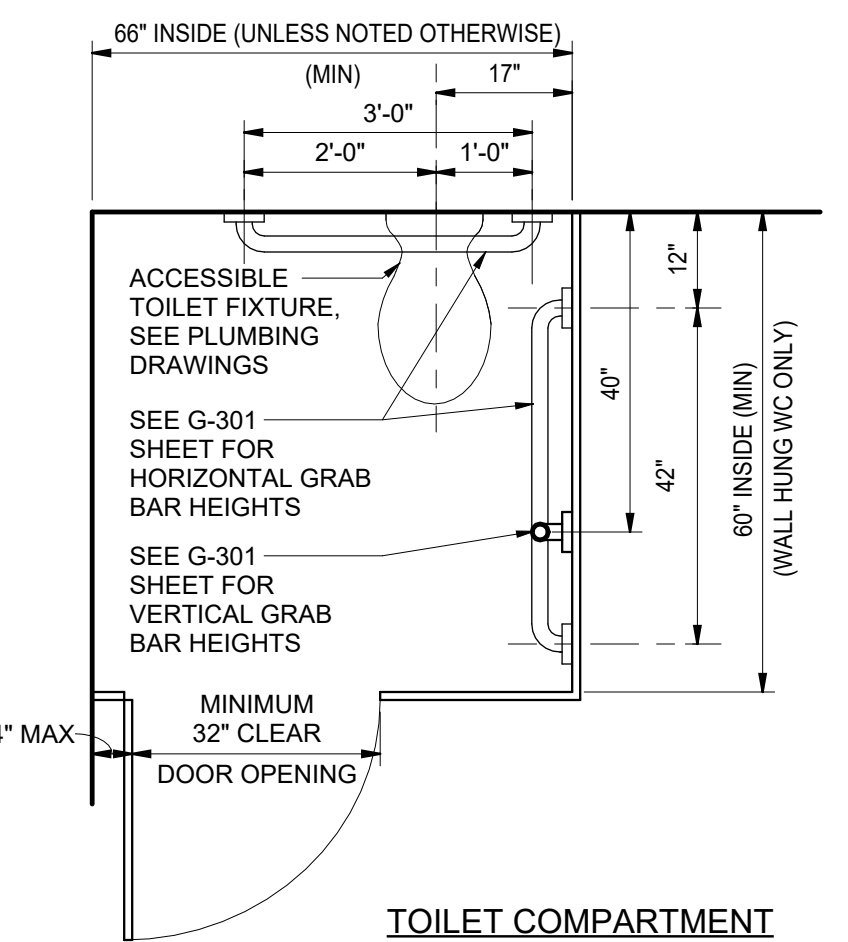
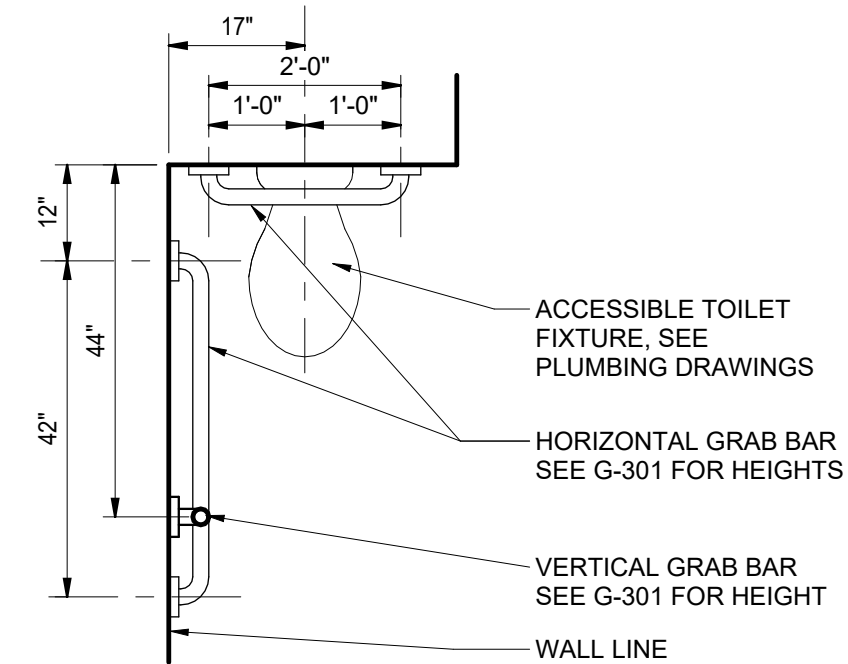
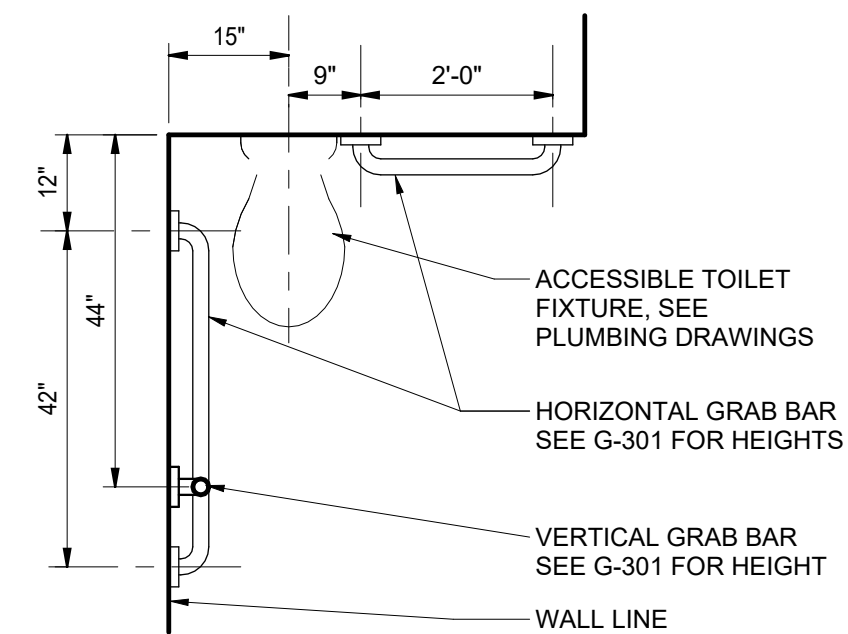
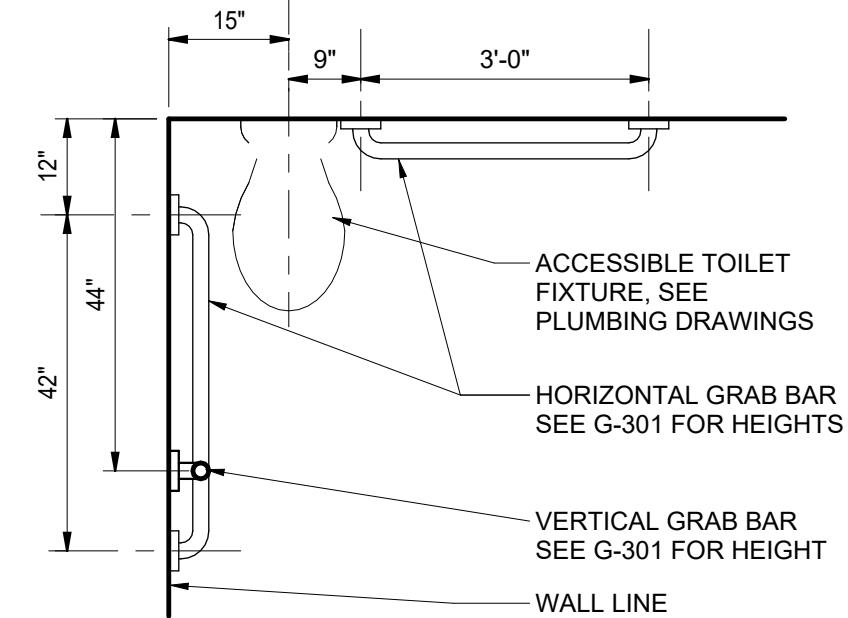


GENERAL RESTROOM NOTES:

- A. FOR GENERAL PROJECT NOTES, MATERIAL INDICATIONS LEGEND, SYMBOL LEGEND, ABBREVIATION, ETC., REFER TO SHEET G-301.
- B. DEPTH OF ALL TOILET ENCLOSURES SHALL BE A MINIMUM OF 5'-0" CLEAR INSIDE DIMENSION UNLESS NOTED OTHERWISE.
- C. REFER TO PLUMBING DRAWINGS FOR FIXTURE TYPES.
- D. REFER TO PLUMBING DRAWINGS FOR FLOOR DRAIN LOCATIONS.
- E. COORDINATE HEIGHT OF GRAB BAR WITH TANK ON FLUSH VALVE OF WALL MOUNTED WATER CLOSE.
- F. INSTALL LAVATORIES AND URINALS AT 2'-6" ON CENTER MINIMUM UNLESS NOTED OTHERWISE.
- G. REFERENCE FINISH PLANS FOR FINISH INFORMATION.
- H. FOR MOUNTING HEIGHTS REFER TO SHEET G-301

PLAN NOTES:

- 1 ACCESSIBLE FACILITIES. 1 A-710
- 2 ACCESSIBLE FIXTURE (LAVATORY/URINAL). SEE PLUMBING DRAWINGS.
- 3 TOILET PAPER HOLDER. (CFCI)
- 4 SOAP DISPENSER. (OFCI)
- 5 AUTOMATIC ELECTRIC HAND DRYER. REFER TO ELECTRICAL DRAWINGS FOR POWER CONNECTION.
- 6 TOILET PARTITION.
- 7 1'-4" W x 2'-6" H MIRROR. AD-1
- 8 NOT USED
- 9 SHOWER ROD AND CURTAIN
- 10 FEMININE NAPKIN DISPOSAL.
- 11 BABY CHANGING TABLE.
- 12 FLOOR DRAIN. REFER TO PLUMBING DRAWINGS.
- 13 CHANGING TABLE BY OWNER.
- 14 ACCESSIBLE SHOWER. 2 A-710
- 15 24"x24" ACCESS PANEL WITH TOP AT 5'-4" ABOVE FLOOR
- 16 SHOWER THRESHOLD. 3 A-710
- 17 PAPER TOWEL DISPENSER. (OFCI)
- 18 INSTALL WALL SPLASH GUARD BELOW ELECTRIC HAND DRYER. MOUNT TOP 3" BELOW BOTTOM OF HAND DRYER.



ACCESSIBLE FACILITIES
1
A-710
1/2" = 1'-0"



GIBRALTAR
DESIGN
ARCHITECTURE - ENGINEERING - INTERIOR DESIGN

PROJECT:

**EARLY
LEARNING
CENTER
ADDITION AND
RENOVATION**

Tippecanoe School Corporation

111 Walter Scholer Dr, Lafayette, IN 47909

CONSTRUCTION DOCUMENTS

GIBRALTAR DESIGN

9102 N. Meridian St., Ste. 300
Indianapolis, IN 46260
Homepage: www.GibraltarDesign.com
Email: info@GibraltarDesign.com
Phone 317.580.5777 Fax 317.580.5778

PROJECT

25-147

DATE

07/09/2025

COORDINATED BY

GW

DRAWN BY

RGH

CHECKED BY

GW

COPYRIGHT NOTICE:

THE CONCEPTS, DESIGNS, PLANS, DETAILS, ETC., SHOWN ON THIS DOCUMENT ARE THE PROPERTY OF GIBRALTAR DESIGN AND WERE CREATED FOR USE ON THIS SPECIFIC PROJECT. NO PART OF THIS INFORMATION SHALL BE USED BY ANY PERSON OR FIRM FOR ANY PURPOSE WITHOUT THE EXPRESS WRITTEN CONSENT OF GIBRALTAR DESIGN. THE OWNERS MAY NOT MAKE COPIES FOR INFORMATION AND REFERENCE IN CONNECTION ONLY WITH THIS PROJECT.

REVISIONS

MARK	DATE	ISSUED FOR
AD-1	07/23/25	ADDENDUM #1
AD-3	08/01/25	ADDENDUM #3

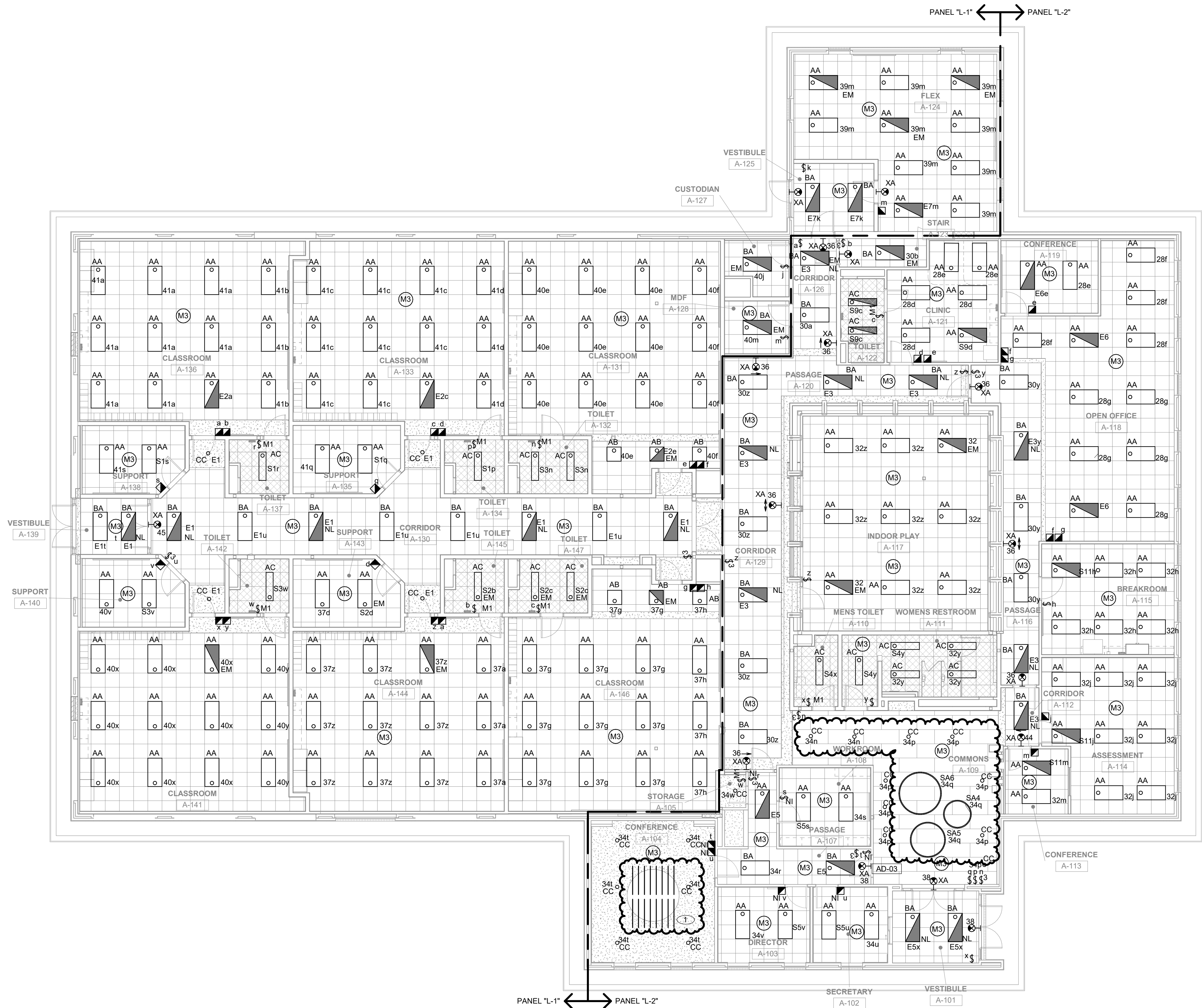
DRAWING
**ENLARGED TOILET ROOM
EQUIPMENT PLANS**

PROJECT
**EARLY LEARNING CENTER
ADDITION AND RENOVATION**

© GIBRALTAR
DESIGN

SHEET

A-710



GENERAL NOTES

1. UNLESS OTHERWISE NOTED, EXTERIOR LIGHTING WITH NORMAL CIRCUIT TAG SHALL BE ROUTED TO EXISTING LIGHTING BRANCH CIRCUITS SERVING EXISTING EXTERIOR LIGHTING AND EXISTING TIME CLOCK AND CONTACTORS.
2. VERIFY TEACHING SURFACE WITH OWNER'S REPRESENTATIVE IN FIELD PRIOR TO INSTALLATION AND ADJUST SWITCHING TO PROPERLY ILLUMINATED TEACHING SURFACE.
3. CAREFULLY COORDINATE FINAL SWITCHING WITH FINAL FURNITURE PLANS AND TEACHING WALL LOCATIONS.
4. CIRCUITS WITH AN 'E' PREFIX INDICATES FEED FROM THE EMERGENCY GENERATOR PANEL. CIRCUITS WITH AN 'S' PREFIX INDICATES FEED FROM THE EMERGENCY STANDBY PANEL.

SHEET NOTES

1. REMOVE EXISTING FLUORESCENT LAMPS AND BALLASTS. PROVIDE AND INSTALL NEW T8 LED RETROFIT TUBES (QTY 16). COMPATIBLE WITH NEW LIGHTING CONTROL S. COORDINATE AND VERIFY EXISTING CONDITIONS AND SYSTEM REQUIREMENTS PRIOR TO PROCUREMENT AND INSTALLATION. COLOR TEMP TO MATCH NEW LIGHTING FIXTURES.



GIBRALTAR

DESIGN

ARCHITECTURE • ENGINEERING • INTERIOR DESIGN



MILLIES

ENGINEERING GROUP
(201) 924-8400
www.milliesengineeringgroup.com

PROJECT:

**EARLY
LEARNING
CENTER
ADDITION AND
RENOVATION**

Tippecanoe School Corporation

111 Walter Scholer Dr, Lafayette, IN
47909

GIBRALTAR DESIGN

9102 N. Meridian St., Ste. 300
Indianapolis, IN 46260
Homepage: www.GibraltarDesign.com
Email: info@GibraltarDesign.com
Phone 317.580.5777 Fax 317.580.5778

PROJECT

25-147

DATE

07/09/2025

COORDINATED BY

SM

DRAWN BY

CJ

CHECKED BY

DJ



COPYRIGHT NOTICE:

THE CONCEPTS, DESIGNS, PLANS, DETAILS, ETC., SHOWN ON THIS DOCUMENT ARE THE PROPERTY OF GIBRALTAR DESIGN AND WERE CREATED FOR USE ON THIS SPECIFIC PROJECT. NONE OF THIS INFORMATION SHALL BE USED BY ANY PERSON OR FIRM FOR ANY PURPOSE WITHOUT THE EXPRESS WRITTEN CONSENT OF GIBRALTAR DESIGN. THE OWNER MAY RETAIN COPIES FOR INFORMATION AND REFERENCE IN CONNECTION ONLY WITH THIS PROJECT.

REVISIONS

MARK	DATE	ISSUED FOR
AD-02	07/30/25	ADDENDUM NO. 2
AD-03	08/01/25	ADDENDUM NO. 3

DRAWING
ELECTRICAL LIGHTING FIRST
FLOOR PLAN

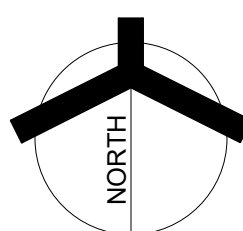
PROJECT
EARLY LEARNING CENTER
ADDITION AND RENOVATION

© GIBRALTAR
DESIGN

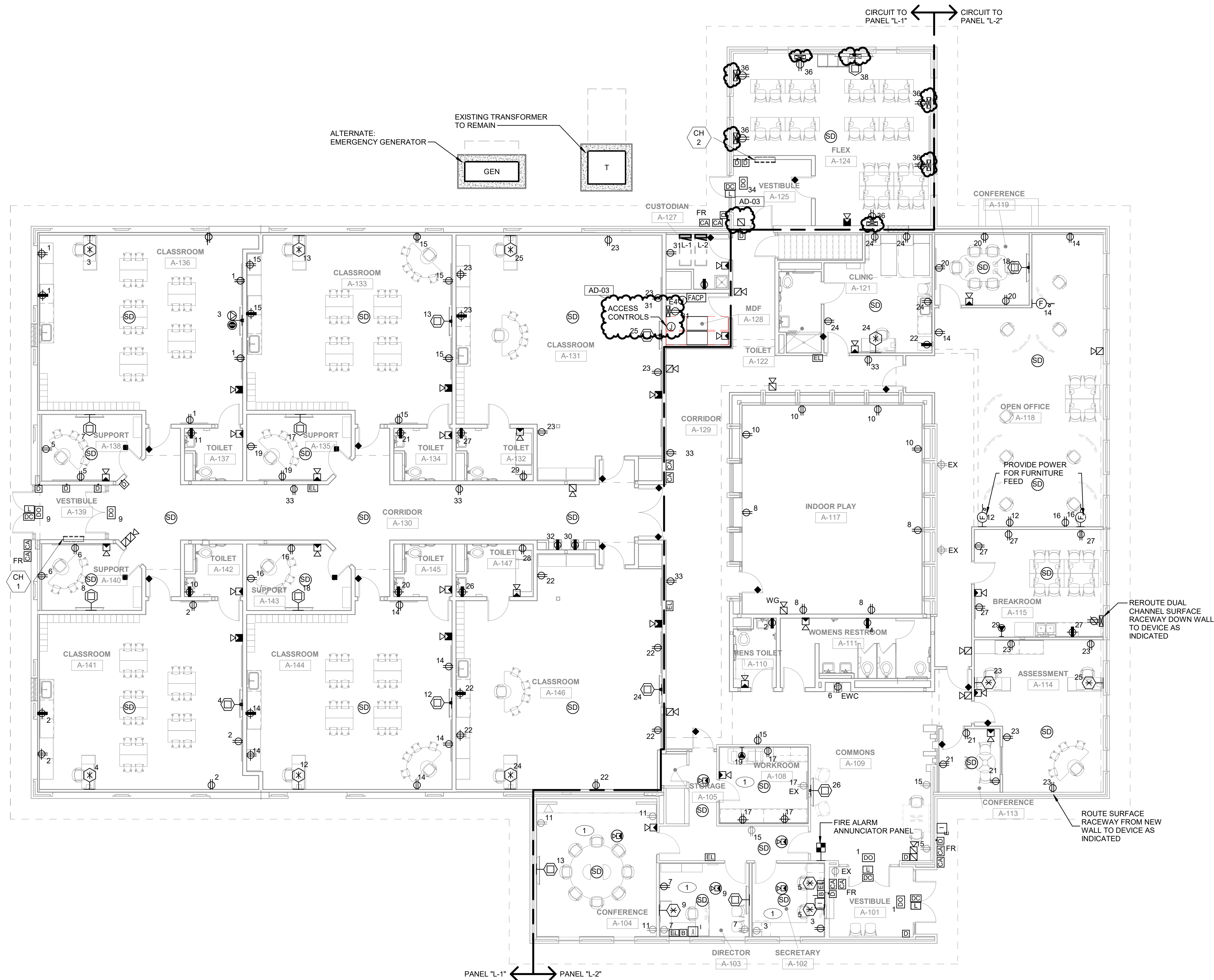
SHEET

EL101

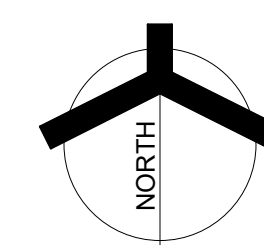
1
EL101
ELECTRICAL LIGHTING FIRST FLOOR PLAN
1/8" = 1'-0"



8/1/2025 1:45:21 PM
C:\Users\smillies\Documents\MEG_Scholar Special Ed Facility_MEP-R25_meg_cad4PAC01E.rvt



1 ELECTRICAL POWER FIRST FLOOR PLAN
EP101/ 1/8" = 1'-0"



GENERAL NOTES

- EXISTING MECHANICAL EQUIPMENT TO BE DEMOLISHED. REMOVE EXISTING WIRING BACK TO EXISTING BRANCH PANEL. REFER TO MECHANICAL CONNECTION SCHEDULE FOR NEW CIRCUITING AND WIRING.
- 20A 120-VOLT RECEPTACLES SHALL BE TAMPER RESISTANT IN ALL CLASSROOMS, CORRIDORS, RESTROOMS AND INDOOR PLAY AREAS.

SHEET NOTES

- NEW RECEPTACLES AND DEVICES IN THIS SPACE SHALL BE INSTALLED IN EXISTING WOOD PANELING WALLS. CONTRACTOR SHALL REMOVE SECTION OF WOOD PANELING AND CUT OPENING IN WALL AS REQUIRED TO RUN POWER AND LOW VOLTAGE CONCEALED AS INDICATED. REINSTALL WOOD PANELING, COMPLETE AS REQUIRED.



GIBRALTAR

DESIGN

ARCHITECTURE • ENGINEERING • INTERIOR DESIGN



MILLIES

ENGINEERING GROUP
(219) 924-8400
www.milliesengineeringgroup.com

PROJECT:

**EARLY
LEARNING
CENTER
ADDITION AND
RENOVATION**

Tippecanoe School Corporation

111 Walter Scholer Dr, Lafayette, IN
47909

GIBRALTAR DESIGN

9102 N. Meridian St., Ste. 300
Indianapolis, IN 46260
Homepage: www.GibraltarDesign.com
Email: info@GibraltarDesign.com
Phone 317.580.5777 Fax 317.580.5778

PROJECT

25-147

DATE

07/09/2025

COORDINATED BY

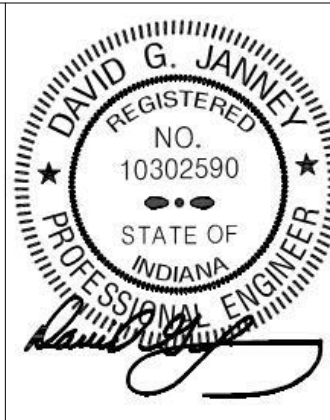
SM

DRAWN BY

CJ

CHECKED BY

DJ



COPYRIGHT NOTICE:

THE CONCEPTS, DESIGNS, PLANS, DETAILS, ETC., SHOWN ON THIS DOCUMENT ARE THE PROPERTY OF GIBRALTAR DESIGN AND WERE CREATED FOR USE ON THIS SPECIFIC PROJECT. NONE OF THIS INFORMATION SHALL BE USED BY ANY PERSON OR FIRM FOR ANY PURPOSE WITHOUT THE EXPRESS WRITTEN CONSENT OF GIBRALTAR DESIGN. THE OWNER MAY RETAIN COPIES FOR INFORMATION AND REFERENCE IN CONNECTION ONLY WITH THIS PROJECT.

REVISIONS

MARK	DATE	ISSUED FOR
AD-02	07/30/25	ADDENDUM NO. 2
AD-03	08/01/25	ADDENDUM NO. 3

DRAWING
ELECTRICAL POWER FIRST
FLOOR PLAN

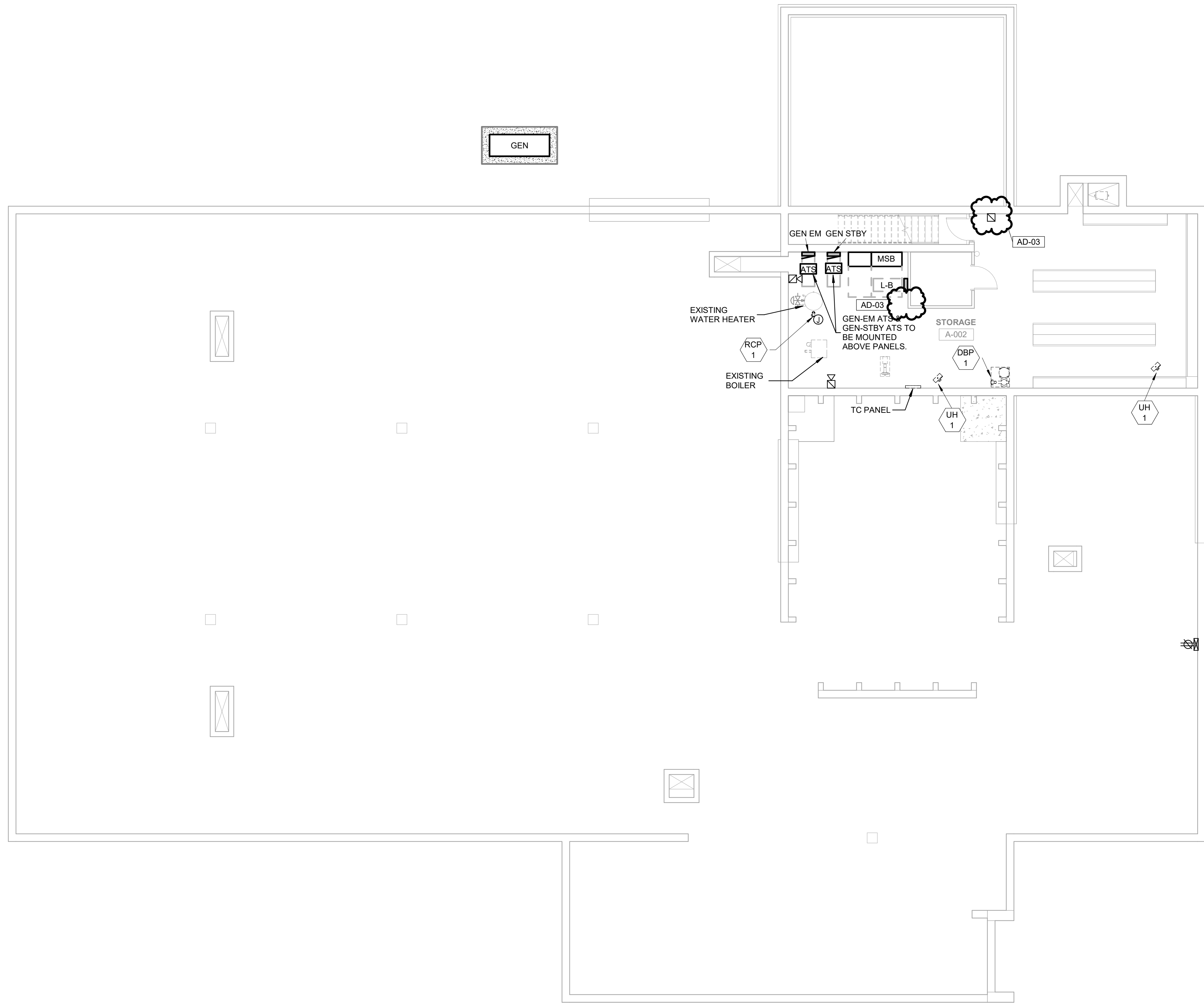
PROJECT
EARLY LEARNING CENTER
ADDITION AND RENOVATION

© GIBRALTAR
DESIGN

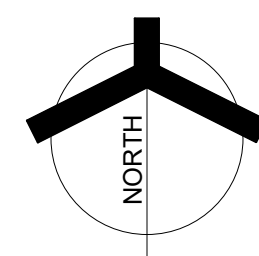
SHEET

EP101

8/1/2025 10:42:26 AM
C:\Users\cjacinto\Documents\MEG_Scholar Special Ed Facility_MEP-R25_cjacentc\MUH5.rvt



1
EP102
ELECTRICAL POWER BASEMENT FLOOR PLAN
1/8" = 1'-0"



GIBRALTAR
DESIGN

ARCHITECTURE • ENGINEERING • INTERIOR DESIGN



MILLIES
ENGINEERING
(219) 924-8400
www.millesengineeringgroup.co

PROJECT:

**EARLY
LEARNING
CENTER
ADDITION AND
RENOVATION**

Tippecanoe School Corporation

111 Walter Scholer Dr, Lafayette, IN
47909

GIBRALTAR DESIGN

9102 N. Meridian St., Ste. 300
Indianapolis, IN 46260
Homepage: www.GibraltarDesign.com
Email: info@GibraltarDesign.com
Phone 317.580.5777 Fax 317.580.5778

PROJECT

25-147

DATE

07/09/2025

COORDINATED BY

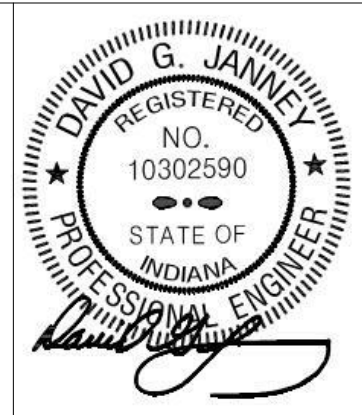
SM

DRAWN BY

CJ

CHECKED BY

DJ



COPYRIGHT NOTICE:

THE CONCEPTS, DESIGNS, PLANS, DETAILS, ETC., SHOWN ON THIS DOCUMENT ARE THE PROPERTY OF GIBRALTAR DESIGN AND WERE CREATED FOR USE ON THIS SPECIFIC PROJECT. NONE OF THIS INFORMATION SHALL BE USED BY ANY PERSON OR FIRM FOR ANY PURPOSE WITHOUT THE EXPRESS WRITTEN CONSENT OF GIBRALTAR DESIGN. THE OWNER MAY RETAIN COPIES FOR INFORMATION AND REFERENCE IN CONNECTION ONLY WITH THIS PROJECT.

REVISIONS

MARK	DATE	ISSUED FOR
AD-01	07/23/25	ADDENDUM NO. 1
AD-02	07/30/25	ADDENDUM NO. 2
AD-03	08/01/25	ADDENDUM NO. 3

DRAWING
ELECTRICAL POWER
BASEMENT FLOOR PLAN

PROJECT
EARLY LEARNING CENTER
ADDITION AND RENOVATION

© GIBRALTAR
DESIGN

SHEET

EP102

L-B															
LOCATION: STORAGE A-002				VOLTS: 120/208 Wye											
SUPPLY FROM: MSB				PHASES: 3											
MOUNTING: SURFACE				MAINS TYPE: MLO											
ENCLOSURE: NEMA-1				MAIN RATING: 225 A											
A.I.C. RATING: 22000 A				BUSSING: COPPER											
NOTES:															
CKT	CIRCUIT DESCRIPTION	LEG.	TRIP	POLES	A	B	C	A	B	C	POLES	TRIP	LEG.	CIRCUIT DESCRIPTION	CKT
1	BOILER		20 A	1	0			192				1	20 A	UH-1	2
3	ACCU		15 A	2		1144				200		1	20 A	WP RECP FOR RT-1	4
5							1144				200	1	20 A	WP RECP FOR RT-1	6
7	BASEMENT LTG		0 A	1	400										8
9															10
11															12
13															14
15															16
17															18
19															20
21															22
23															24
25															26
27															28
29															30
31															32
33															34
35															36
37															38
39															40
41															42
REMARKS:															
GC = PROVIDE GFI CIRCUIT BREAKER															
ST = PROVIDE SHUNT TRIP BREAKER															
LO = PROVIDE LOCKABLE DEVICE															
N = NEW DEVICE IN EXISTING PANEL															
										PANEL TOTALS					
										TOTAL CONNECTED LOAD PHASE A: 592 VA					
										TOTAL CONNECTED LOAD PHASE B: 1344 VA					
										TOTAL CONNECTED LOAD PHASE C: 1344 VA					
										TOTAL CONNECTED LOAD: 3280 VA					
REFER TO SPECIFICATIONS FOR ADDITIONAL INFORMATION										TOTAL CONNECTED AMPS: 9 A					

L-1																				
LOCATION: CUSTODIAN A-127				VOLTS: 120/208 Wye																
SUPPLY FROM: MSB				PHASES: 3																
MOUNTING: SURFACE				MAINS TYPE: MLO																
ENCLOSURE: NEMA-1				MAIN RATING: 200 A																
A.I.C. RATING: 22000 A				BUSSING: COPPER																
NOTES:																				
CKT	CIRCUIT DESCRIPTION	LEG.	TRIP	POLES	A	B	C	A	B	C	POLES	TRIP	LEG.	CIRCUIT DESCRIPTION	CKT					
1	CLASSRM A-136 RECP		20 A	1	1600			1000			1	20 A		CLASSRM A-141 RECP	2					
3	CLASSRM A-136 TEACHER		20 A	1		1000			900		1	20 A		CLASSRM A-141 TEACHER	4					
5	SUPPORT A-138 RECP		20 A	1			400			400	1	20 A		SUPPORT A-140 RECEPT	6					
7	SUPPORT A-138 TV		20 A	1	400			400			1	20 A		SUPPORT A-140 TV	8					
9	VESTIBULE A-139 DOOR...		20 A	1		2400			200		1	20 A		TOILET A-142 RECP	10					
11	TOILET A-132 RECP		20 A	1			200			900	1	20 A		CLASSROOM A-144 TEACHER	12					
13	CLASSRM A-133 TEACHER		20 A	1	900			1200			1	20 A		CLASSROOM A-144 RECP	14					
15	CLASSRM A-133 RECP		20 A	1		1600			400		1	20 A		SUPPORT A-143 TV	16					
17	SUPPORT A-135 TV		20 A	1			400			400	1	20 A		SUPPORT A-143 RECEPT	18					
19	SUPPORT A-135 RECP		20 A	1	400			200			1	20 A		TOILET A-143 RECEPT	20					
21	TOILET A-134 RECP		20 A	1		200			1200		1	20 A		CLASSRM A-146 RECP	22					
23	CLASSRM A-131 RECP		20 A	1			1200			900	1	20 A		CLASSROOM A-146 TEACHER	24					
25	CLASSRM A-131		20 A	1	900			200			1	20 A		TOILET A-147 RECEPT	26					
27	TOILET A-143 RECEPT		20 A	1		200			200		1	20 A		A-147 ADJUSTABLE BED	28					
29	A-147 ADJUSTABLE BED		20 A	1			200			200	1	20 A	GC	ENC	30					
31	MDP A-128 / CUST A-127 RECP		20 A	1	600			200			1	20 A	GC	ENC	32					
33	CORRIDOR A-130 RECP		20 A	1		1000			1200		1	20 A		VESTIBULE A-125 DOOR...	34					
35	CH-1		20 A	1			240			1200	1	20 A		FLEX 1-124 RECP	36					
37	LIGHTING		20 A	1	1275			400			1	20 A		FLEX 1-124 TV	38					
39	LIGHTING		20 A	1		405			1515		1	20 A		LIGHTING	40					
41	SPARE	--	20 A	1						0	1	20 A	--	SPARE	42					
43	EXIT SIGNS		20 A	1	5			0			1	20 A	--	SPARE	44					
45	SPARE	--	20 A	1		0			0		1	20 A	--	SPARE	46					
47	SPARE	--	20 A	1			0			0	1	20 A	--	SPARE	48					
49	SPARE	--	2 A	1	0			0			1	2 A	--	SPARE	50					
51	SPARE	--	20 A	1		0			0		1	20 A	--	SPARE	52					
53	SPACE	--	--	1	--	--	--	--	--	--	1	--	--	SPACE	54					
55	SPACE	--	--	1	--	--	--	--	--	--	1	--	--	SPACE	56					
57	SPACE	--	--	1	--	--	--	--	--	--	1	--	--	SPACE	58					
59	SPACE	--	--	1	--	--	--	--	--	--	1	--	--	SPACE	60					
REMARKS:																				
GC = PROVIDE GFI CIRCUIT BREAKER																				
ST = PROVIDE SHUNT TRIP BREAKER																				
LO = PROVIDE LOCKABLE DEVICE																				
N = NEW DEVICE IN EXISTING PANEL																				
											PANEL TOTALS									
											TOTAL CONNECTED LOAD PHASE A:					9680 VA				
											TOTAL CONNECTED LOAD PHASE B:					12220 VA				
											TOTAL CONNECTED LOAD PHASE C:					7720 VA				
											TOTAL CONNECTED LOAD:					29620 VA				
REFER TO SPECIFICATIONS FOR ADDITIONAL INFORMATION											TOTAL CONNECTED AMPS:					82 A				

L-2

LOCATION: CUSTODIAN A-127

SUPPLY FROM: MSB

MOUNTING: SURFACE

ENCLOSURE: NEMA-1

A.I.C. RATING: 22000 A

NOTES:

VOLTS: 120/208 Wye

PHASES: 3

MAINS TYPE: MLO

MAIN RATING: 200 A

BUSSING: COPPER

CKT	CIRCUIT DESCRIPTION	LEG.	TRIP	POLES	A	B	C	A	B	C	POLES	TRIP	LEG.	CIRCUIT DESCRIPTION	CKT
1	VESTIBULE A-101 DOOR.		20 A	1	2400			200			1	20 A		A-110 RESTROOM RECP	2
3	SECRETARY A-102 RECP		20 A	1		400			200		1	20 A		A-111 RESTROOM RECP	4
5	SECRETARY A-102 RECP		20 A	1			1000			200	1	20 A		COMMONS A-109 RECP	6
7	DIRECTOR A-103 RECP		20 A	1	600			800			1	20 A		INDOOR PLAY A-117 RECP	8
9	DIRECTOR A-103 RECP		20 A	1		900			800		1	20 A		INDOOR PLAY A-117 RECP	10
11	CONFERENCE A-104 RECP		20 A	1			600			200	1	20 A		OPEN OFFICE A-118 RECEPT	12
13	CONFERENCE A-104 TEACHER		20 A	1	400			400			1	20 A		OPEN OFFICE A-118 RECEPT	14
15	COMMONS A-109 RECP		20 A	1		800			200		1	0 A		OPEN OFFICE A-118 RECEPT	16
17	WORKROOM A-108 RECP		20 A	1			1000			400	1	20 A		CONFERENCE A-119 TV	18
19	WORKROOM A-108 RECP		20 A	1	800			600			1	20 A		CONFERENCE A-119 RECP	20
21	CONFERENCE A-113 RECP		20 A	1		600			200		1	20 A		CLINIC FRIDGE	22
23	ASSESSMENT A-114 RECP		20 A	1			1300			1300	1	20 A		CLINIC A-121 RECP	24
25	ASSESSMENT A-114 TEACHER		20 A	1	500			400			1	20 A		COMMONS A-109 TEACHER	26
27	BREAKROOM A-115 RECP		20 A	1		1000			675		1	20 A		LIGHTING	28
29	BREAKROOM A-115 FRIDGE		20 A	1			800			405	1	20 A		LIGHTING	30
31	TEF-1		15 A	1	420			1140			1	20 A		LIGHTING	32
33	TEF-2		15 A	1		420			882		1	20 A		LIGHTING	34
35	TEF-3		15 A	1			420			45	1	20 A		EXIT SIGNS	36
37	TEF-4		15 A	1	420			15			1	20 A		EXIT SIGNS	38
39	EXTERIOR LTG		20 A	1		0			168		1	20 A		CH-2	40
41	SPARE	--	20 A	1			0			0	1	20 A	--	SPARE	42
43	SPARE	--	20 A	1	0			0			1	20 A	--	SPARE	44
45	SPARE	--	20 A	1		0			0		1	20 A	--	SPARE	46
47	SPARE	--	20 A	1			0			0	1	20 A	--	SPARE	48
49	SPARE	--	20 A	1	0			0			1	20 A	--	SPARE	50
51	SPACE	--	--	1		--			0		1	20 A	--	SPACE	52
53	SPACE	--	--	1			--			--	1	--	--	SPACE	54
55	SPACE	--	--	1	--			--			1	--	--	SPACE	56
57	SPACE	--	--	1		--			--		1	--	--	SPACE	58
59	SPACE	--	--	1			--			--	1	--	--	SPACE	60

REMARKS:

GC = PROVIDE GFI CIRCUIT BREAKER

ST = PROVIDE SHUNT TRIP BREAKER

LO = PROVIDE LOCKABLE DEVICE

N = NEW DEVICE IN EXISTING PANEL

--	--	--	--	--	--	--	--	--	--	--	--	--	--	--	--	--	--	--	--	--	--	--	--	--	--	--	--	--	--	--	--	--	--	--	--	--	--	--	--	--	--	--	--	--	--	--	--	--	--	--	--	--	--	--	--	--	--	--	--	--	--	--	--	--	--	--	--	--	--	--	--	--	--	--	--	--	--	--	--	--	--	--	--	--	--	--	--	--	--	--	--	--	--	--	--	--	--	--	--	--	--	--	--	--	--	--	--	--	--	--	--	--	--	--	--	--	--	--	--	--	--	--	--	--	--	--	--	--	--	--	--	--	--	--	--	--	--	--	--	--	--	--	--	--	--	--	--	--	--	--	--	--	--	--	--	--	--	--	--	--	--	--	--	--	--	--	--	--	--	--	--	--	--	--	--	--	--	--	--	--	--	--	--	--	--	--	--	--	--	--	--	--	--	--	--	--	--	--	--	--	--	--	--	--	--	--	--	--	--	--	--	--	--	--	--	--	--	--	--	--	--	--	--	--	--	--	--	--	--	--	--	--	--	--	--	--	--	--	--	--	--	--	--	--	--	--	--	--	--	--	--	--	--	--	--	--	--	--	--	--	--	--	--	--	--	--	--	--	--	--	--	--	--	--	--	--	--	--	--	--	--	--	--	--	--	--	--	--	--	--	--	--	--	--	--	--	--	--	--	--	--	--	--	--	--	--	--	--	--	--	--	--	--	--	--	--	--	--	--	--	--	--	--	--	--	--	--	--	--	--	--	--	--	--	--	--	--	--	--	--	--	--	--	--	--	--	--	--	--	--	--	--	--	--	--	--	--	--	--	--	--	--	--	--	--	--	--	--	--	--	--	--	--	--	--	--	--	--	--	--	--	--	--	--	--	--	--	--	--	--	--	--	--	--	--	--	--	--	--	--	--	--	--	--	--	--	--	--	--	--	--	--	--	--	--	--	--	--	--	--	--	--	--	--	--	--	--	--	--	--	--	--	--	--	--	--	--	--	--	--	--	--	--	--	--	--	--	--	--	--	--	--	--	--	--	--	--	--	--	--	--	--	--	--	--	--	--	--	--	--	--	--	--	--	--	--	--	--	--	--	--	--	--	--	--	--	--	--	--	--	--	--	--	--	--	--	--	--	--	--	--	--	--	--	--	--	--	--	--	--	--	--	--	--	--	--	--	--	--	--	--	--	--	--	--	--	--	--	--	--	--	--	--	--	--	--	--	--	--	--	--	--	--	--	--	--	--	--	--	--	--	--	--	--	--	--	--	--	--	--	--	--	--	--	--	--	--	--	--	--	--	--	--	--	--	--	--	--	--	--	--	--	--	--	--	--	--	--	--	--	--	--	--	--	--	--	--	--	--	--	--	--	--	--	--	--	--	--	--	--	--	--	--	--	--	--	--	--

8/1/2025 10:42:31 AM
C:\Users\cjacinto\Documents\MEG_Scholar Special Ed Facility MEP-R25_cjacinco\FAUJ5.rvt

TYPE	DESCRIPTION	MANUFACTURER	SERIES OR CATALOG NUMBER	LAMP	COLOR TEMP	MIN LUMENS	MAX WATTS	VOLTS	CONTROL	MOUNTING TYPE	MOUNTING HEIGHT	REMARKS
AA	2'X4' RECESSED VOLUMETRIC LED FIXTURE WITH TUNABLE WHITE FOR CLASSROOMS	METALUX	24EN-LD2-67-UNV-840-U	LED	4000K	6700 LM	57 W	120/277V	0-10V	RECESSED LAY-IN	--	---
AB	2'X2' RECESSED VOLUMETRIC LED FIXTURE WITH TUNABLE WHITE FOR CLASSROOMS	METALUX	22EN-LD2-34-UNV-840-U	LED	4000K	3200LM	26 W	120/277V	0-10V	RECESSED LAY-IN	--	---
AC	1'X4' RECESSED VOLUMETRIC LED FIXTURE WITH TUNABLE WHITE FOR CLASSROOMS	METALUX	14EN-LD2-XX-UNV-840-U	LED	4000K	4114 LM	33 W	120/277V	0-10V	RECESSED LAY-IN	--	---
BA	2'X4' RECESSED VOLUMETRIC LED FIXTURE	METALUX	24CZ2-40-UNV-L940-CD1-U	LED	4000K	3000 LM	25 W	120/277V	0-10V	RECESSED LAY-IN	--	---
CC	6" DIAMETER LED OPEN DOWNLIGHT WITH SEMI-SPECULAR REFLECTOR AND WHITE FLANGE	HALO LITHONIA PRESCOLITE	LDN6-40-15-L06-AR-LSS-TRW-MVOLT-GZ1 HC8XXD010-HM6XX835-61WDHWF LTR-6RD-H-XXXXL-DM1-LTR-6RD-T-XX35K8WD-SSWT	LED	4000K	500 LM	43 W	120/277V	0-10V	RECESSED LAY-IN/ DRYWALL	--	---
SA4	4' DIAMETER DECORATIVE RING LIGHT	LUMENWERX	#CURV2RIS-D-4FT-HLO-FS-90CRI-500LMF-40K-12V	LED	4000K	50000LM	150 W	120/277V	0-10V	SURFACE	--	--
SA5	5' DIAMETER DECORATIVE RING LIGHT	LUMENWERX	#CURV2RIS-D-5FT-HLO-FS-90CRI-500LMF-40K-12V	LED	4000K	50000LM	190 W	120/277V	0-10V	SURFACE	--	---
SA6	6' DIAMETER DECORATIVE RING LIGHT	LUMENWERX	#CURV2RIS-D-6FT-HLO-FS-90CRI-750LMF-40K-12V	LED	4000K	72000LM	235 W	120/277V	0-10V	SURFACE	--	--
SB	8' SURFACE MOUNTED LED WRAPAROUND FIXTURE WITH CURVED SMOOTH DIFFUSER	LITHONIA METALUX	BLWP8-XXL-ADSM-GZ1-LP835 8AWS-L3C3-UNV SQ8-XL-U-35	LED	3500K	3500 LM	37 W	120/277V	0-10V	SURFACE	--	--
LC	LED POLE MOUNTED AREA LIGHTING FIXTURE	LITHONIA VIPER	DSX1-P340K-T2M-MVOLT-XX-XX VP-2-320L-170L-340-4K7-3-UNV-ASQU-BLT-BC	LED	4000K	15000	102 W	120/277V	0-10V	POLE	--	---
XA	LED DIE-CAST ALUMINUM SINGLE FACE EXIT SIGN, GREEN LETTERING, BRUSHED ALUMINUM, NICAD BATTERY, SELF-DIAGNOSTICS	SURELITES LITHONIA DUAL LITE	CX71SD LE-S-1-G-ELN-SD SESRWEL	LED	---	---	1 W	120/277V	---	WALL/CEILING	--	
XB	LED DIE-CAST ALUMINUM DUAL FACE EXIT SIGN, GREEN LETTERING, BRUSHED ALUMINUM, NICAD BATTERY, SELF-DIAGNOSTICS	SURELITES LITHONIA DUAL LITE	CX72SD LE-S-2-G-ELN-SD SEDRWEI	LED	---	---	1 W	120/277V	---	WALL/CEILING	--	

[AD-03]

MECHANICAL EQUIPMENT CONNECTION SCHEDULE																			
TAG	DESCRIPTION	LOAD					VOLT	PHASE	PANEL	CKT. NO.	FEEDER			DISCONNECT SWITCH			STARTER		
		WATTS	HP	MCA	FLA	MOCF					CABLE	CONDUIT	SIZE	FUSE	M.C./P.C.	E.C.	TYPE	M.C./P.C.	E.C.
AC / CU-1	AC / CONDENSING UNIT	2288	11			15	208	1	L-B	3.5								X	
DBP-1	DOMESTIC BOOSTER PUMP				9.1		208	3		<unnamed>									
EWC-1					5		120	1											
RCP-1	RECIRCULATION PUMP	0			2.1		120	1											
RT-1	ROOF TOP UNIT	71333	198			250	208	3	MSB	4							X		
RT-2	ROOF TOP UNIT	35299	120			150	208	2		<unnamed>							X		
TEF-1	TOILET EXHAUST FAN	420	3.5			15	120	1	L-2	31								X	
TEF-2	TOILET EXHAUST FAN	420	3.5			15	120	1	L-2	33								X	
TEF-3	TOILET EXHAUST FAN	420	3.5			15	120	1	L-2	35								X	
TEF-4	TOILET EXHAUST FAN	420	3.5			15	120	1	L-2	37								X	
UH-1	UNIT HEATER	96			0.8	15	120	1	L-B	2							X		
UH-1	UNIT HEATER	96			0.8	15	120	1	L-B	2							X		



GIBALTAR
DESIGN
ARCHITECTURE • ENGINEERING • INTERIOR DESIGN



PROJECT:

EARLY
LEARNING
CENTER
ADDITION AND
RENOVATION

Tippecanoe School Corporation

111 Walter Scholer Dr, Lafayette, IN 47909

GIBALTAR DESIGN

9102 N. Meridian St., Ste. 300
Indianapolis, IN 46260
Homepage: www.GibraltarDesign.com
Email: info@GibraltarDesign.com
Phone 317.580.5777 Fax 317.580.5778

PROJECT

25-147

DATE

07/09/2025

COORDINATED BY

SM

DRAWN BY

CJ

CHECKED BY

DJ



COPYRIGHT NOTICE:

THE CONCEPTS, DESIGNS, PLANS, DETAILS, ETC., SHOWN ON THIS DOCUMENT ARE THE PROPERTY OF GIBALTAR DESIGN AND WERE CREATED FOR USE ON THIS SPECIFIC PROJECT. NONE OF THIS INFORMATION SHALL BE USED BY ANY PERSON OR FIRM FOR ANY PURPOSE WITHOUT THE EXPRESS WRITTEN CONSENT OF GIBALTAR DESIGN. THE OWNER MAY RETAIN COPIES FOR INFORMATION AND REFERENCE IN CONNECTION ONLY WITH THIS PROJECT.

REVISIONS

MARK | DATE | ISSUED FOR

AD-01 07/23/25 ADDENDUM NO. 1

AD-02 07/30/25 ADDENDUM NO. 2

AD-03 08/01/25 ADDENDUM NO.3

DRAWING
ELECTRICAL SCHEDULES

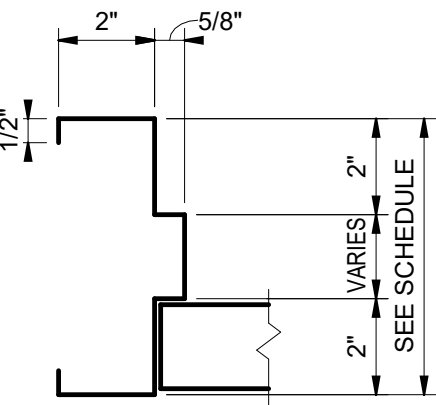
PROJECT
EARLY LEARNING CENTER
ADDITION AND RENOVATION

© GIBALTAR
DESIGN

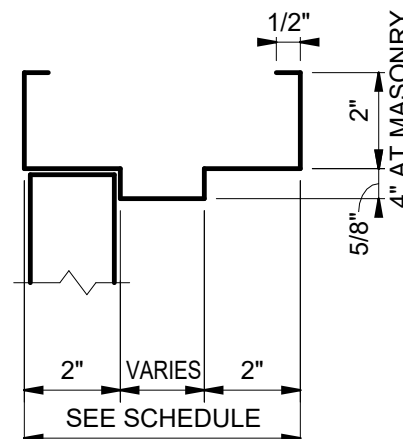
SHEET

E-502

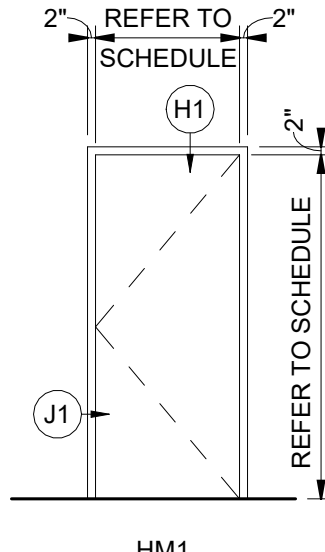
NEW SHEET ADDED TO
CONSTRUCTION DOCUMENTS IN
THIS ADDENDUM



J1



H1



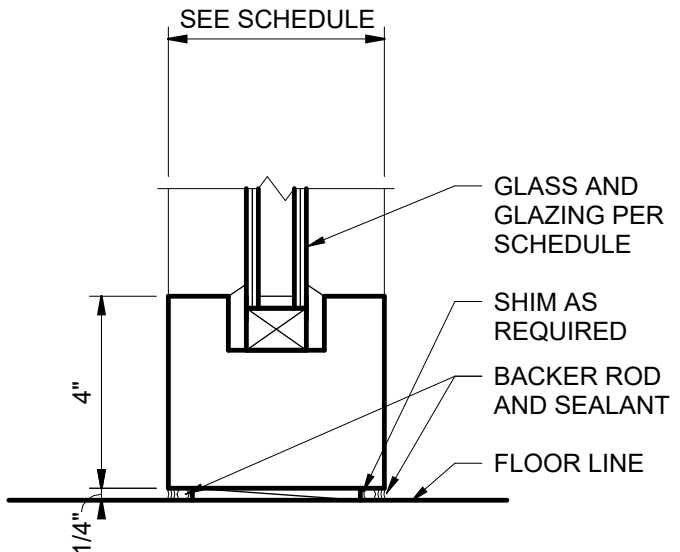
NOTES - HOLLOW METAL (HM)

- FOR HOLLOW METAL HEAD, JAMB AND SILL DETAILS REFER TO WALL SECTIONS AND HOLLOW METAL (HM) FRAME PROFILES 4 / A-601.
- PROVIDE SEALANT AROUND PERIMETER OF ALL FRAMES.
- DIMENSIONS SHOWN ARE NOMINAL. FIELD VERIFY ALL DIMENSIONS SHOWN PRIOR TO FABRICATION AND INSTALLATION.
- JAMB, HEAD, AND SILL DO NOT SHOW WALL CONSTRUCTION. SEE FLOOR PLAN FOR WALL MATERIALS. SEE ROOM FINISH SCHEDULE FOR WALL FINISHES.
- PROVIDE GLAZING AND GLASS STOPS.

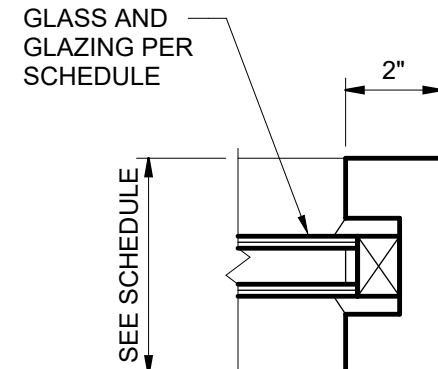
3

HOLLOW METAL FRAME ELEVATIONS (HM)

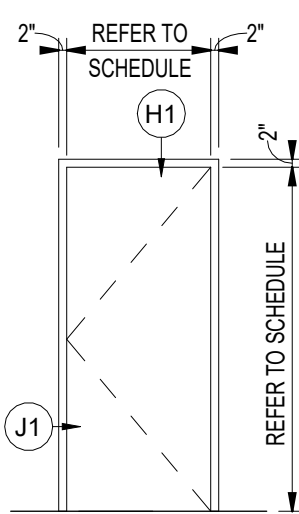
A-601 / 3" = 1'-0"



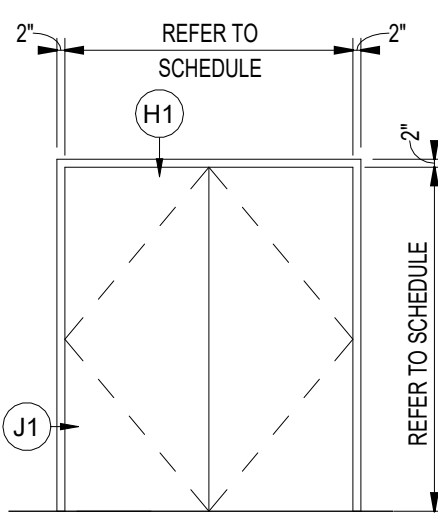
S1



J1 H1



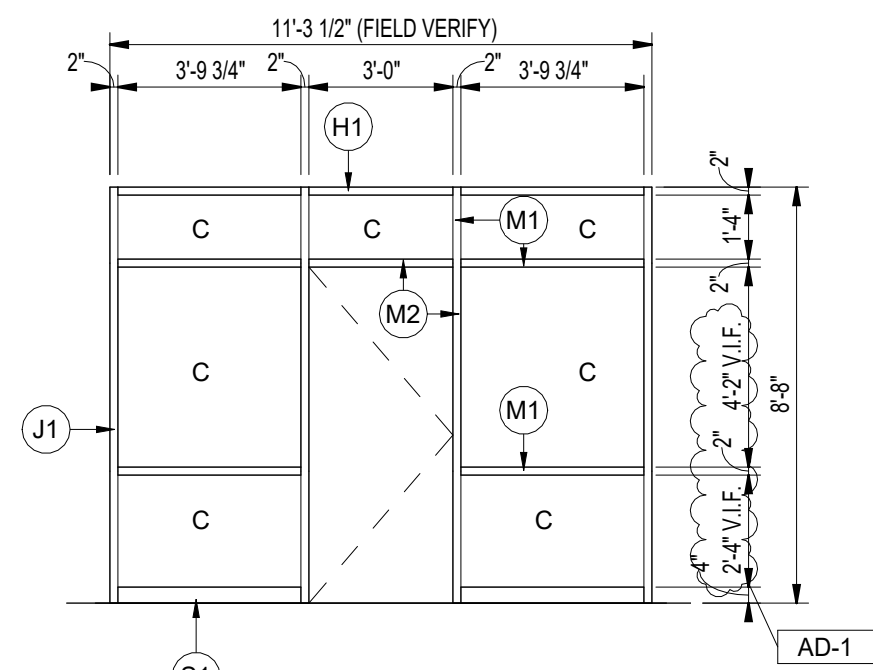
SF1



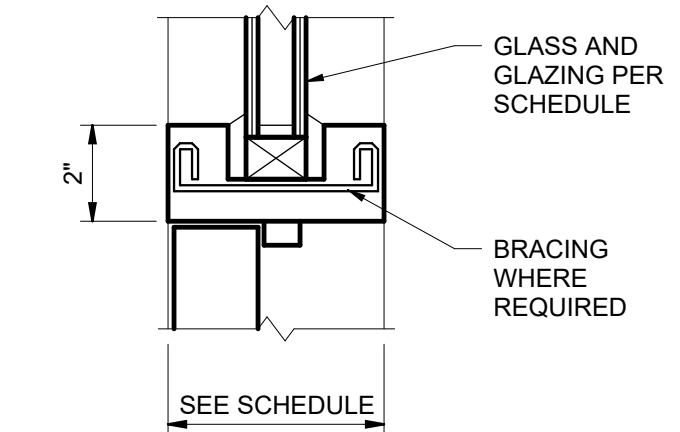
SF2

NOTES - ALUMINUM STOREFRONT (SF)

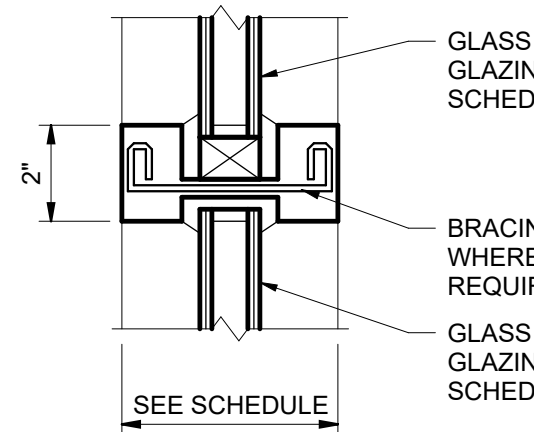
- FOR STOREFRONT HEAD, JAMB AND SILL DETAILS REFER TO WALL SECTIONS AND ALUMINUM STOREFRONT (SF) FRAME PROFILES 6 / A-601.
- PROVIDE SHIM SPACE, BACKER ROD, AND SEALANT AROUND PERIMETER OF ALL FRAMES WHERE FRAMING ABUTS DISSIMILAR MATERIAL.
- PROVIDE FOAM INSULATION IN SHIM SPACE AROUND PERIMETER OF ALL EXTERIOR STOREFRONT FRAMING.
- DIMENSIONS SHOWN ARE NOMINAL. FIELD VERIFY ALL DIMENSIONS SHOWN PRIOR TO FABRICATION AND INSTALLATION.
- ALL FRAMES IN EXTERIOR WALLS SHALL BE THERMALLY BROKEN WITH 1" INSULATED GLAZING.
- REFER TO DOOR AND FRAME SCHEDULE FOR GLASS SCHEDULE.
- ALL GLAZING SHALL CONFORM TO STATE AND LOCAL CODES.
- PROVIDE 3/4"x3/4"x1/8" ALUMINUM SCRIBE MOLD AT PERIMETER OF BOTH SIDES ON ALL FRAMES UNLESS NOTED OTHERWISE. SET SCRIBE MOLDS IN SEALANT.



SF3



M2



M1

ALUMINUM STOREFRONT FRAME PROFILES (SF)

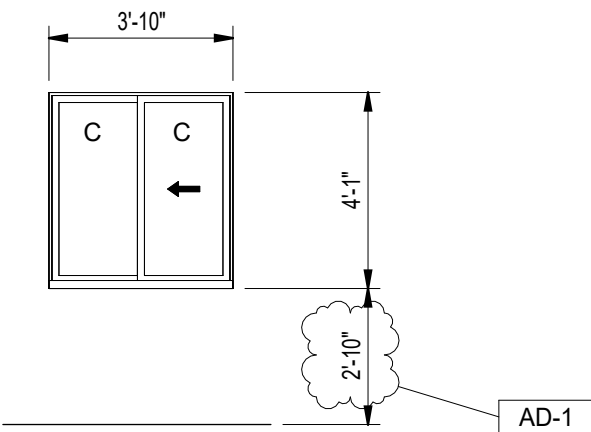
A-601 / 3" = 1'-0"

ALUMINUM STOREFRONT ELEVATIONS (SF)

A-601 / 1/4" = 1'-0"

NOTES - ALUMINUM WINDOWS (W)

- PROVIDE SHIM SPACE, BACKER ROD AND SEALANT AROUND PERIMETER OF ALL WINDOW FRAMING WHERE FRAMING ABUTS DISSIMILAR MATERIALS.
- PROVIDE FOAM INSULATION IN SHIM SPACE AROUND PERIMETER OF ALL EXTERIOR WINDOW FRAMING.
- DIMENSIONS SHOWN ARE NOMINAL. FIELD VERIFY ALL DIMENSIONS SHOWN PRIOR TO FABRICATION AND INSTALLATION.
- ALL FRAMES IN EXTERIOR WALLS SHALL BE THERMALLY BROKEN WITH 1" INSULATED GLAZING.
- ALL GLAZING SHALL CONFORM TO STATE AND LOCAL CODES.
- PROVIDE 3/4"x3/4" ALUMINUM SCRIBE MOLD AT PERIMETER OF BOTH SIDES ON ALL WINDOWS UNLESS NOTED OTHERWISE. SET SCRIBE MOLDS IN SEALANT.



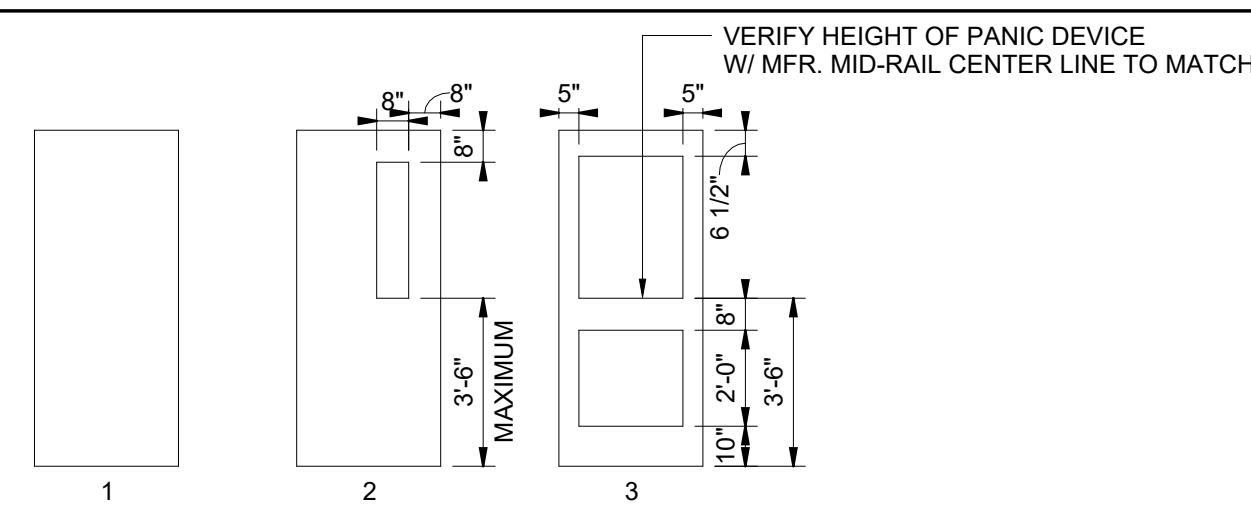
W1

7

ALUMINUM WINDOW ELEVATIONS (W)

A-601 / 1/4" = 1'-0"

GLASS SCHEDULE	
GLASS TYPES	
A	1" INSULATED (CLEAR) - SCHOOL GUARD
B	1/4" TEMPERED (CLEAR)
C	1/2" TEMPERED (CLEAR) - SCHOOL GUARD
D	1/2" TEMPERED (CLEAR, FIRE RATED) - SCHOOL GUARD



DOOR AND FRAME SCHEDULE - BASE BID

NO		DESCRIPTION	TYPE	DOORS			GLASS			FRAME			HARDWARE			NOTES
				W	H	MATL	DOOR	SIDELIGHT	TRANSOM	MATL	DEPTH	ELEV.	LABEL	EXIT DEVICE	CLOSER	
A-101A	EXISTING	--	3'-0"	7'-0"	AL	--	--	--	--	AL	--	--	EXISTING	EXISTING	11	
A-101B	SINGLE	3	3'-0"	7'-0"	AL	C	C	C	C	AL	4 1/2"	SF3	--	YES	YES	1, 2, 3, 8
A-102	SINGLE	2	3'-0"	7'-0"	WD	D	--	--	--	HM	8 3/8"	HM1	20	--	YES	7
A-103A	SINGLE	2	3'-0"	7'-0"	WD	--	--	--	--	HM	8 3/8"	HM1	60	--	YES	7
A-103B	EXISTING	--	3'-0"	7'-0"	HM	--	--	--	--	HM	8 3/8"	HM1	--	--	YES	6, 12
A-105	SINGLE	2	3'-0"	7'-0"	WD	D	--	--	--	HM	8 3/8"	HM1	20	--	YES	7
A-106	SINGLE	2	3'-0"	7'-0"	WD	C	--	--	--	HM	8 3/8"	HM1	--	--	--	--
A-107	SINGLE	2	3'-0"	7'-0"	WD	C	--	--	--	HM	8 3/8"	HM1	--	--	--	--
A-108	SINGLE	2	3'-0"	7'-0"	WD	D	--	--	--	HM	8 3/8"	HM1	20	--	YES	7
A-109	SINGLE	1	3'-0"	7'-0"	WD	--	--	--	--	HM	8 3/8"	HM1	--	--	YES	--
A-110	SINGLE	1	3'-0"	7'-0"	WD	--	--	--	--	HM	8 3/8"	HM1	--	--	YES	--
A-111	SINGLE	1	3'-0"	7'-0"	WD	--	--	--	--	HM	8 3/8"	HM1	--	--	YES	--
A-112	SINGLE	2	3'-0"	7'-0"	WD	C	--	--	--	HM	8 3/8"	HM1	--	YES	YES	2, 7, 8
A-113	SINGLE	2	3'-0"	7'-0"	WD	D	--	--	--	HM	8 3/8"	HM1	20	--	YES	7
A-114	SINGLE	1	3'-0"	7'-0"	WD	--	--	--	--	HM	8 3/8"	HM1	--	--	YES	--
A-115	SINGLE	2	3'-0"	7'-0"	WD	D	--	--	--	HM	8 3/8"	HM1	20	--	YES	7
A-116	SINGLE	2	3'-0"	7'-0"	WD	B	--	--	--	HM	8 3/8"	HM1	--	--	--	--
A-117	SINGLE	2	3'-0"	7'-0"	WD	D	--	--	--	HM	8 3/8"	HM1	20	--	YES	7
A-118	SINGLE	2	3'-0"	7'-0"	WD	B	--	--	--	HM	8 3/8"	HM1	--	--	--	--
A-120	EXISTING	--	3'-0"	7'-0"	HM	--	--	--	--	HM	--	--	EXISTING	EXISTING	11	
A-121	SINGLE	1	3'-0"	7'-0"	WD	--	--	--	--	HM	8 3/8"	HM1	20	--	YES	--
A-122	SINGLE	1	3'-0"	7'-0"	WD	--	--	--	--	HM	8 3/8"	HM1	20	--	YES	--
A-123	SINGLE	1	3'-0"	7'-0"	WD	--	--	--	--	HM	8 3/8"	HM1	20	--	YES	--
A-124	SINGLE	2	3'-0"	7'-0"	WD	D	--	--	--	HM	8 3/8"	HM1	--	--	YES	7
A-124B	SINGLE	2	3'-0"	7'-0"	FRP	A	--	--	--	AL	--	--	SF1	--	YES	1, 2, 4, 6
A-127A	SINGLE	2	3'-0"	7'-0"	WD	D	--	--	--	HM	8 3/8"	HM1	--	--	YES	7, 14
A-127B	EXISTING	AD-3	6'-0"	7'-0"	HM	--	--	--	--	HM	--	--	--	--	--	6, 12
A-128	SINGLE	1	3'-0"	7'-0"	WD	--	--	--	--	HM	8 3/8"	HM1	--	--	--	--
A-129	SINGLE	2	3'-0"	7'-0"	WD	D	--	--	--	HM	8 3/8"	HM1	20	--	YES	7
A-130	SINGLE	2	3'-0"	7'-0"	WD	D	--	--	--	HM	8 3/8"	HM1	20	--	YES	7
A-131	SINGLE	2	3'-0"	7'-0"	WD	B	--	--	--	HM	8 3/8"	HM1	--	--	--	--
A-132A	SINGLE	2	3'-0"	7'-0"	WD	D	--	--	--	HM	8 3/8"	HM1	20	--	YES	7
A-132B	SINGLE	1	3'-0"	7'-0"	WD	--	--	--	--	HM	8 3/8"	HM1	--	--	--	9, 13
A-133A	SINGLE	2	3'-0"	7'-0"	WD	D	--	--	--	HM	8 3/8"	HM1	20	--	YES	7
A-133B	SINGLE	1	3'-0"	7'-0"	WD	--	--	--	--	HM	8 3/8"	HM1	--	--	--	9, 13
A-134	SINGLE	1	3'-0"	7'-0"	WD	--	--	--	--	HM	8 3/8"	HM1	20	--	YES	--
A-135	SINGLE	2	3'-0"	7'-0"	WD	B	--	--	--	HM	8 3/8"	HM1	--	--	--	--

DOOR AND FRAME SCHEDULE - ALTERNATE BID

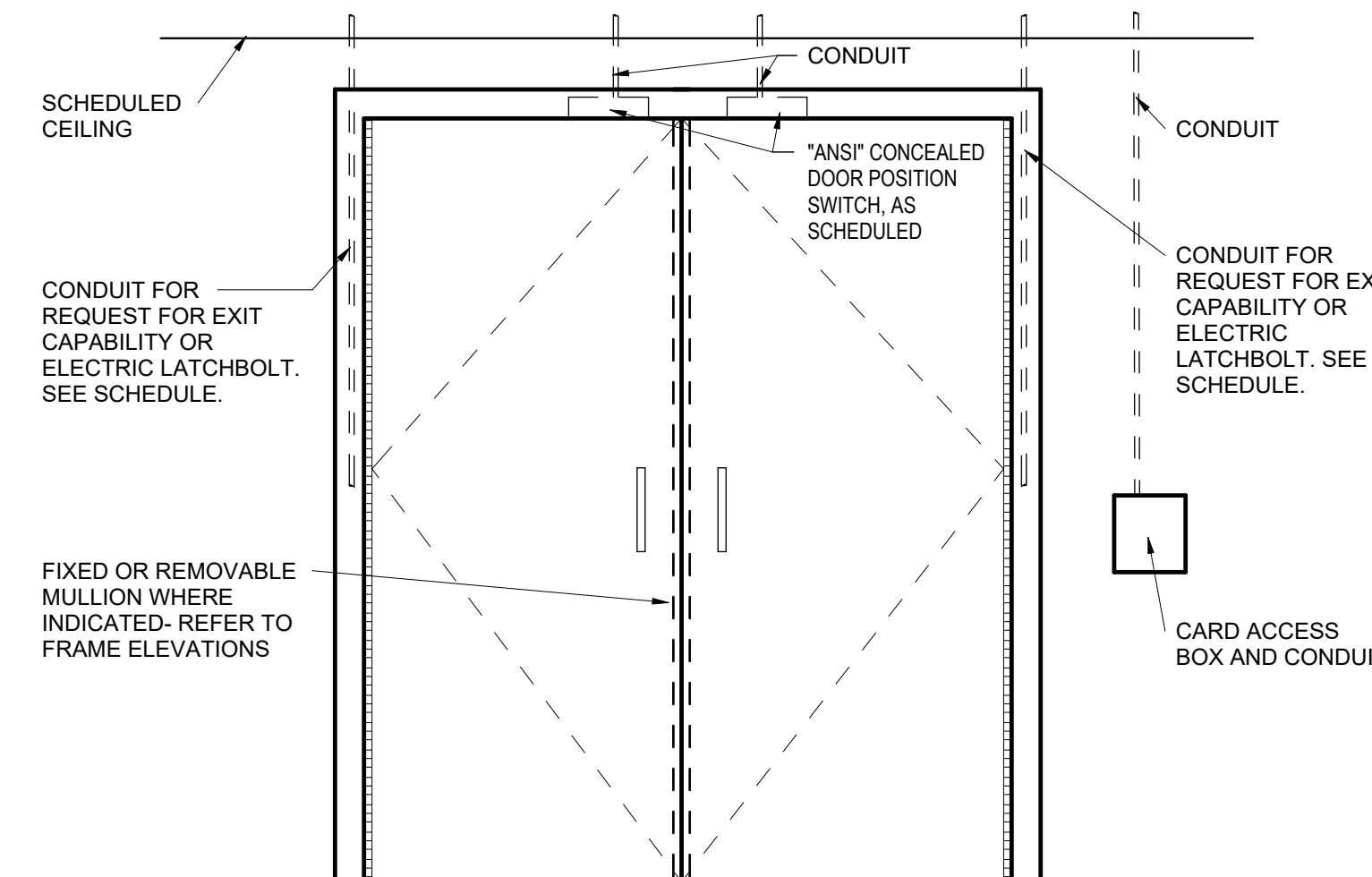
NO		DESCRIPTION	TYPE	DOORS			GLASS			FRAME			HARDWARE			NOTES
				W	H	MATL	DOOR	SIDELIGHT	TRANSOM	MATL	WIDTH	ELEV.	LABEL	EXIT DEVICE	CLOSER	
A-125	SINGLE	2	3'-0"	7'-0"	WD	D	--	--	--	HM	8 3/8"	HM1	--	YES	YES	7
A-126	DOUBLE	1	6'-4"	7'-2"	FRP	A	--	--	--	AL	6"	SF2	--	YES	YES	1, 2, 4, 5, 6
A-127	SINGLE	2	3'-0"	7'-0"	WD	D	--	--	--	HM	8 3/8"	HM1	--	--	YES	7

GENERAL DOOR NOTES:

- JAMB, HEAD, AND SILL DO NOT SHOW WALL CONSTRUCTION. SEE FLOOR PLAN FOR WALL MATERIALS. SEE A-800 SERIES DRAWINGS FOR FINISHES.
- PROVIDE GLAZING AND GLASS STOPS AS INDICATED.
- FIELD VERIFY ALL DIMENSIONS AND CONDITIONS.
- SHIM SPACE IS NOT SHOWN ON FRAME ELEVATIONS FOR ALUMINUM STOREFRONT. TAKE THESE DIMENSIONS INTO ACCOUNT AND ADJUST DIMENSIONS ACCORDINGLY.
- FOR ELECTRIC ROUGH-IN AT DOORS REFER TO DETAIL 1 / A-601.
- FOR DOOR POSITION WITHIN WALL REFER TO FRAME MOUNTING DETAILS 2 / A-601.
- FOR HOLLOW METAL FRAME ELEVATIONS (HM) REFER TO 3 / A-601. FOR HOLLOW METAL (HM) FRAME PROFILES REFER TO 4 / A-601.
- FOR ALUMINUM STOREFRONT ELEVATIONS (SF) REFER TO 5 / A-601. FOR STOREFRONT (SF) FRAME PROFILES REFER TO 6 / A-601.
- GLASS NOTED IN SIDELIGHT COLUMN FOR BORROWED LIGHT FRAMES APPLIES TO ALL OPENINGS IN FRAME, UNLESS NOTED OTHERWISE.
- REFER TO FLOOR PLANS FOR LOCATIONS OF ADA PUSH PADS FOR POWER ASSISTED OPERATORS.
- REFER TO FRAME ELEVATIONS FOR HEAD, JAMB, AND SILL DETAILS.
- PROVIDE SEALANT AROUND PERIMETER OF ALL HOLLOW METAL FRAMES BETWEEN FRAME AND WALL.

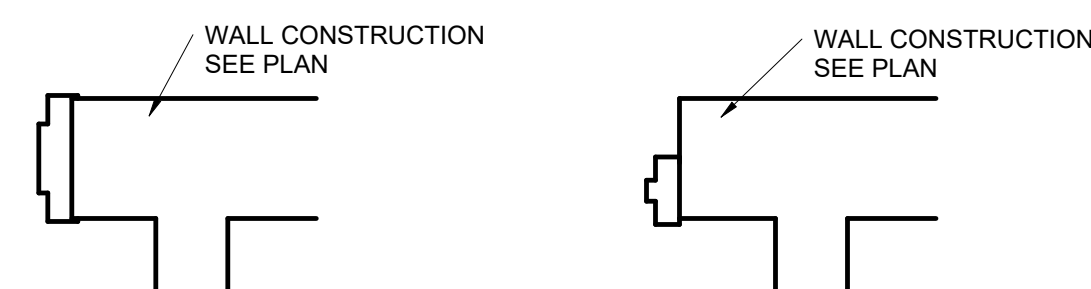
DOOR SCHEDULE NOTES (REMARKS):

- PANIC DEVICE OR LATCH TO HAVE ELECTRIC LATCH BOLT. PREPARE FRAME FOR ELECTRIFIED HINGE.
- DOOR TO BE CONTROLLED BY FOB AND FIRST RESPONDER FOB / PROXIMITY READER. REFER TO ELECTRICAL DRAWINGS FOR ROUGH-IN.
- PROVIDE POWER-ASSISTED OPERATOR (OPERABLE LEAF INDICATED BY -ADA ON DOOR LEAF).
- PROVIDE ALUMINUM THRESHOLD SET IN FULL BED OF MASTIC.
- PROVIDE KEYED REMOVABLE MULLION.
- PREPARE DOOR AND FRAME FOR DOOR POSITION SWITCH.
- PROVIDE WALL MOUNTED ELECTROMAGNETIC DOOR HOLDER(S) WITH RELEASE AT RECEPTION DESK.
- PROVIDE DOOR RELEASE ON AI PHONE LOCATED AT RECEPTION DESK.
- PROVIDE DROP SEAL, SOUND GASKETING AND ADA COMPLIANT THRESHOLD.
- REPLACE EXISTING DOOR KNOB / LEVER WITH NEW LEVER HANDLE.
- EXISTING FOB, ADA PUSH PAD, AI PHONE TO REMAIN. ADD FIRST RESPONDER FOB / PROXIMITY READER. REFER TO ELECTRICAL DRAWINGS FOR ROUGH-IN. ADD NEW POWER ASSIST OPERATOR ON INSIDE.
- REPLACE EXISTING LEVER WITH NEW LEVER (EXIT LOCK WITH NO KEYED ACCESS FROM EXTERIOR).
- PROVIDE KEYED ACCESS FROM BOTH ROOMS (ABILITY TO BE LEFT UNLOCKED AT ALL TIMES OR LOCKED AT ALL TIMES).
- BASE BID ONLY. OMIT IN ALTERNATE.



ELECTRICAL ROUGH-IN AT DOOR FRAME

A-601 / 3/4" = 1'-0"



FRAME MOUNTING DETAILS

A-601 / 3/4" = 1'-0"



GIBRALTAR DESIGN

ARCHITECTURE - ENGINEERING - INTERIOR DESIGN

PROJECT:

ALTERNATIVE LEARNING CENTER ADDITION AND RENOVATION

Tiptecanoe School Corporation

2241 Old Romney Rd, Lafayette, IN 47909

CONSTRUCTION DOCUMENTS

GIBRALTAR DESIGN

9102 N. Meridian St., Ste. 300
Indianapolis, IN 46260
Homepage: www.GibraltarDesign.com
Email: info@GibraltarDesign.com
Phone 317.580.5777 Fax 317.580.5778

PROJECT

25-148

DATE

07/09/2025

COORDINATED BY

GW

DRAWN BY

RGH

CHECKED BY

GW

COPYRIGHT NOTICE:

THE CONCEPTS, DESIGNS, PLANS, DETAILS, ETC. SHOWN ON THIS DOCUMENT ARE THE PROPERTY OF GIBRALTAR DESIGN AND WERE CREATED FOR USE ON THIS SPECIFIC PROJECT. NONE OF THIS INFORMATION SHALL BE USED BY ANY PERSON OR FIRM FOR ANY PURPOSE WITHOUT THE EXPRESS WRITTEN CONSENT OF GIBRALTAR DESIGN. THE OWNERS MAY NOT REPRODUCE OR TRANSMIT THIS INFORMATION IN ANY FORM OR BY ANY MEANS, ELECTRONIC OR MECHANICAL, INCLUDING PHOTOCOPYING, RECORDING, OR BY ANY INFORMATION STORAGE AND RETRIEVAL SYSTEM, WITHOUT THE EXPRESS WRITTEN CONSENT OF GIBRALTAR DESIGN.

REVISIONS

MARK / DATE

ISSUED FOR

AD-1 07/22/25 ADDENDUM #1

AD-3 08/01/25 ADDENDUM #3

DRAWING

DOOR SCHEDULE, FRAME

PROFILES, ELEVATIONS AND

DETAILS

PROJECT

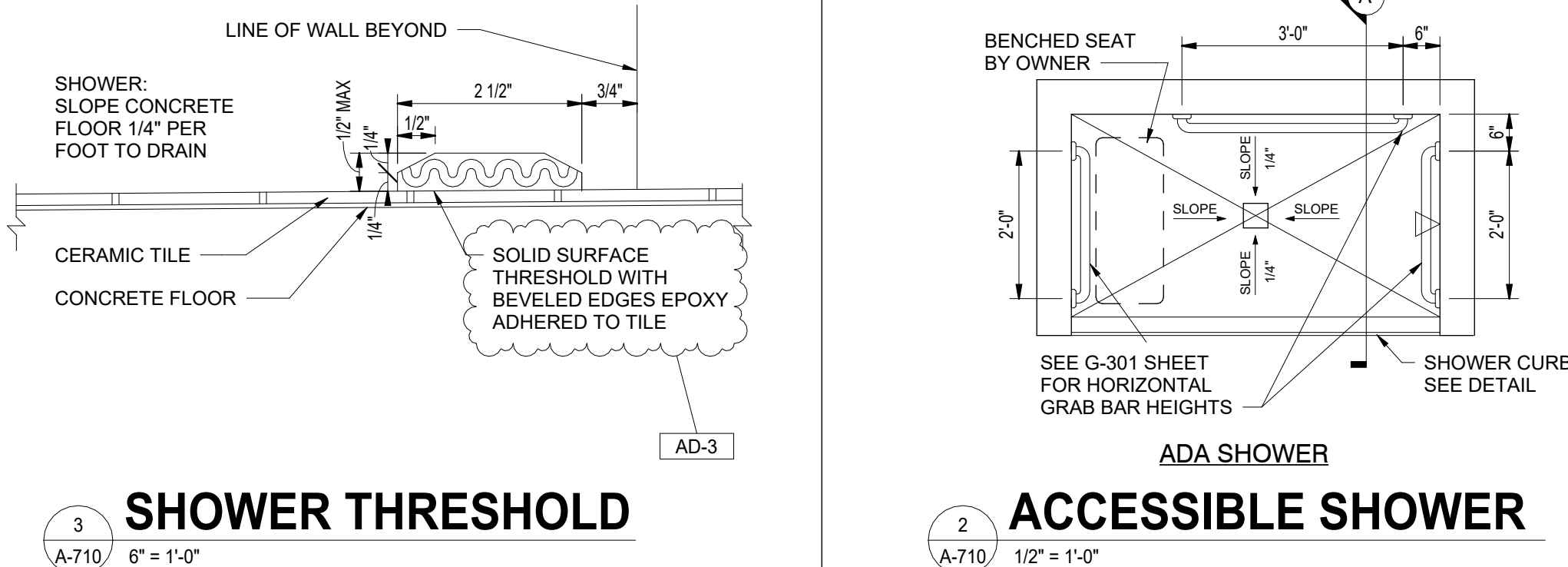
ALTERNATIVE LEARNING CENTER

ADDITION AND RENOVATION

© GIBRALTAR DESIGN

SHEET

A-601

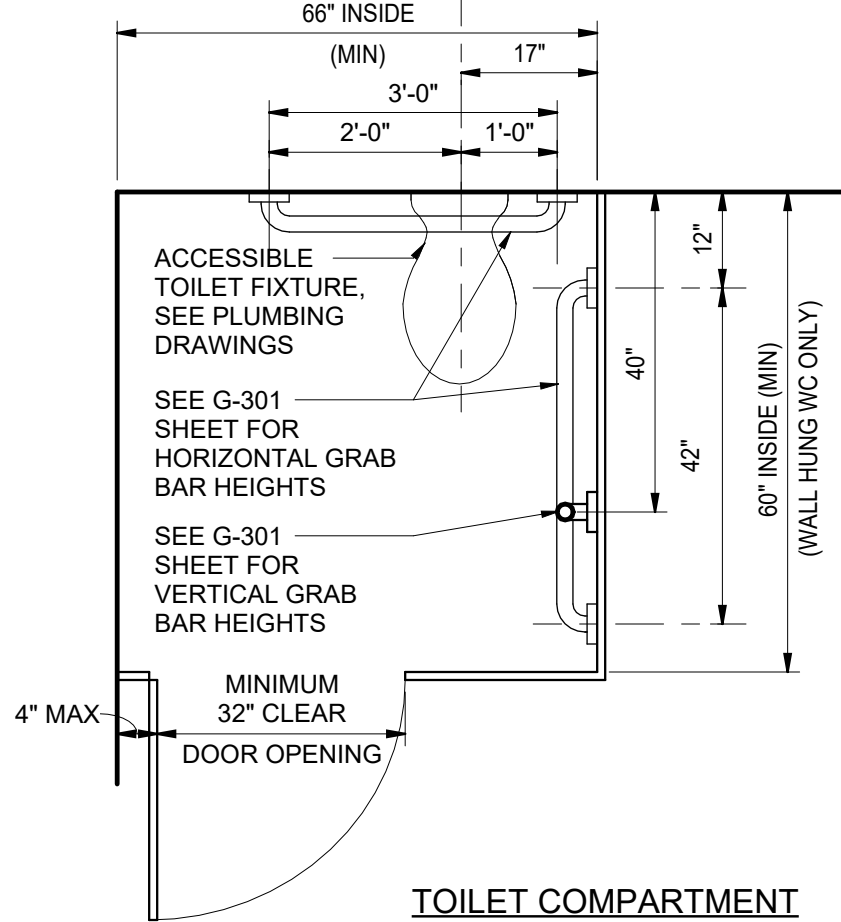
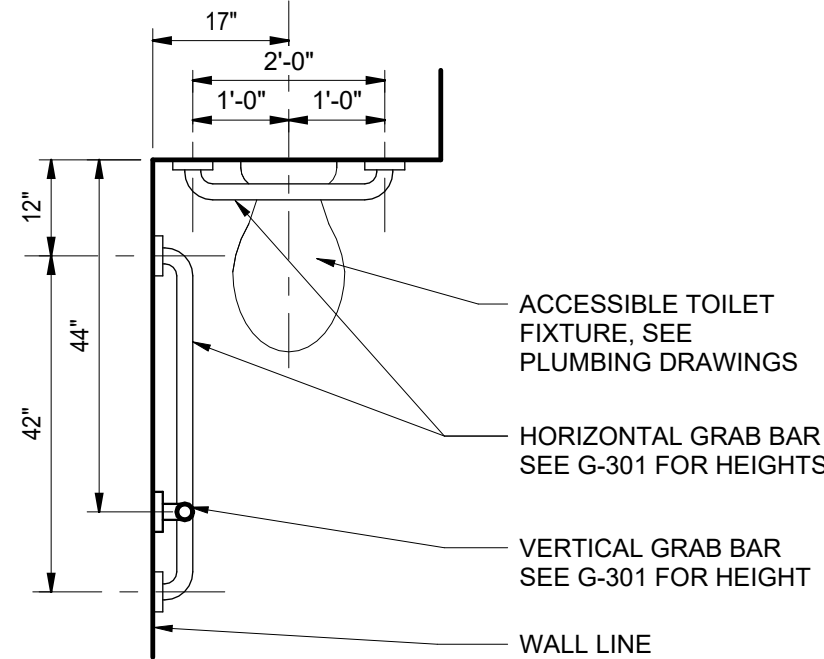
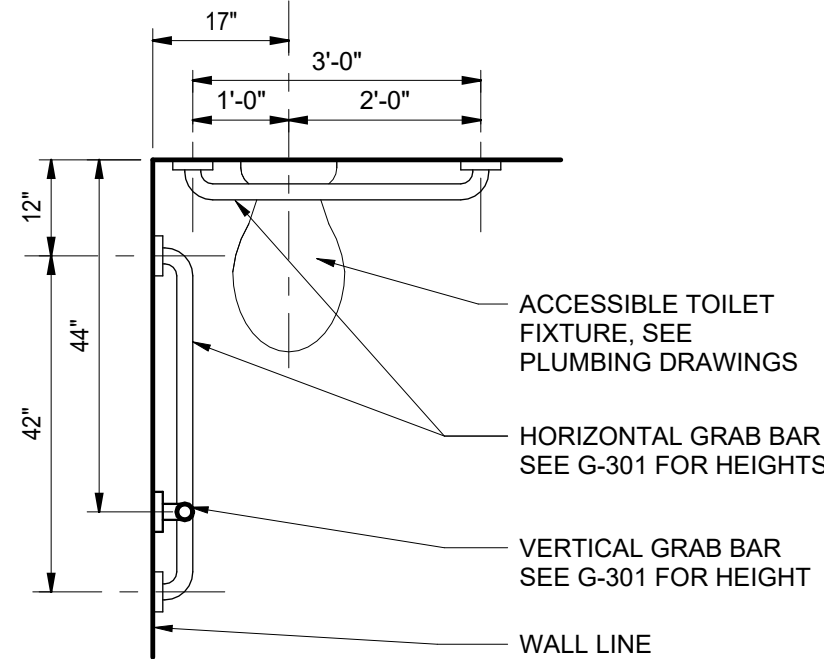


GENERAL RESTROOM NOTES:

- A. FOR GENERAL PROJECT NOTES, MATERIAL INDICATIONS LEGEND, SYMBOL LEGEND, ABBREVIATION, ETC., REFER TO SHEET G-301.
- B. DEPTH OF ALL TOILET ENCLOSURES SHALL BE A MINIMUM OF 5'-0" CLEAR INSIDE DIMENSION UNLESS NOTED OTHERWISE.
- C. REFER TO PLUMBING DRAWINGS FOR FIXTURE TYPES.
- D. REFER TO PLUMBING DRAWINGS FOR FLOOR DRAIN LOCATIONS.
- E. COORDINATE HEIGHT OF GRAB BAR WITH TANK ON FLUSH VALVE OF WALL MOUNTED WATER CLOSE.
- F. INSTALL LAVATORIES AND URINALS AT 2'-6" ON CENTER MINIMUM UNLESS NOTED OTHERWISE.
- G. REFERENCE FINISH PLANS FOR FINISH INFORMATION.
- H. FOR MOUNTING HEIGHTS REFER TO SHEET G-301

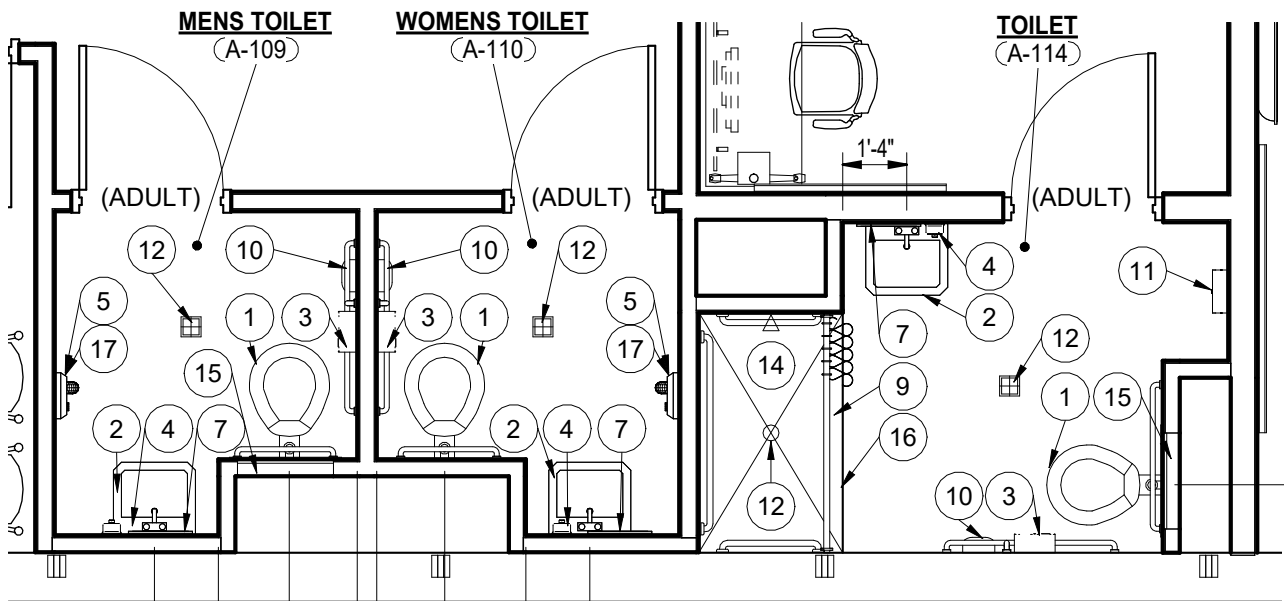
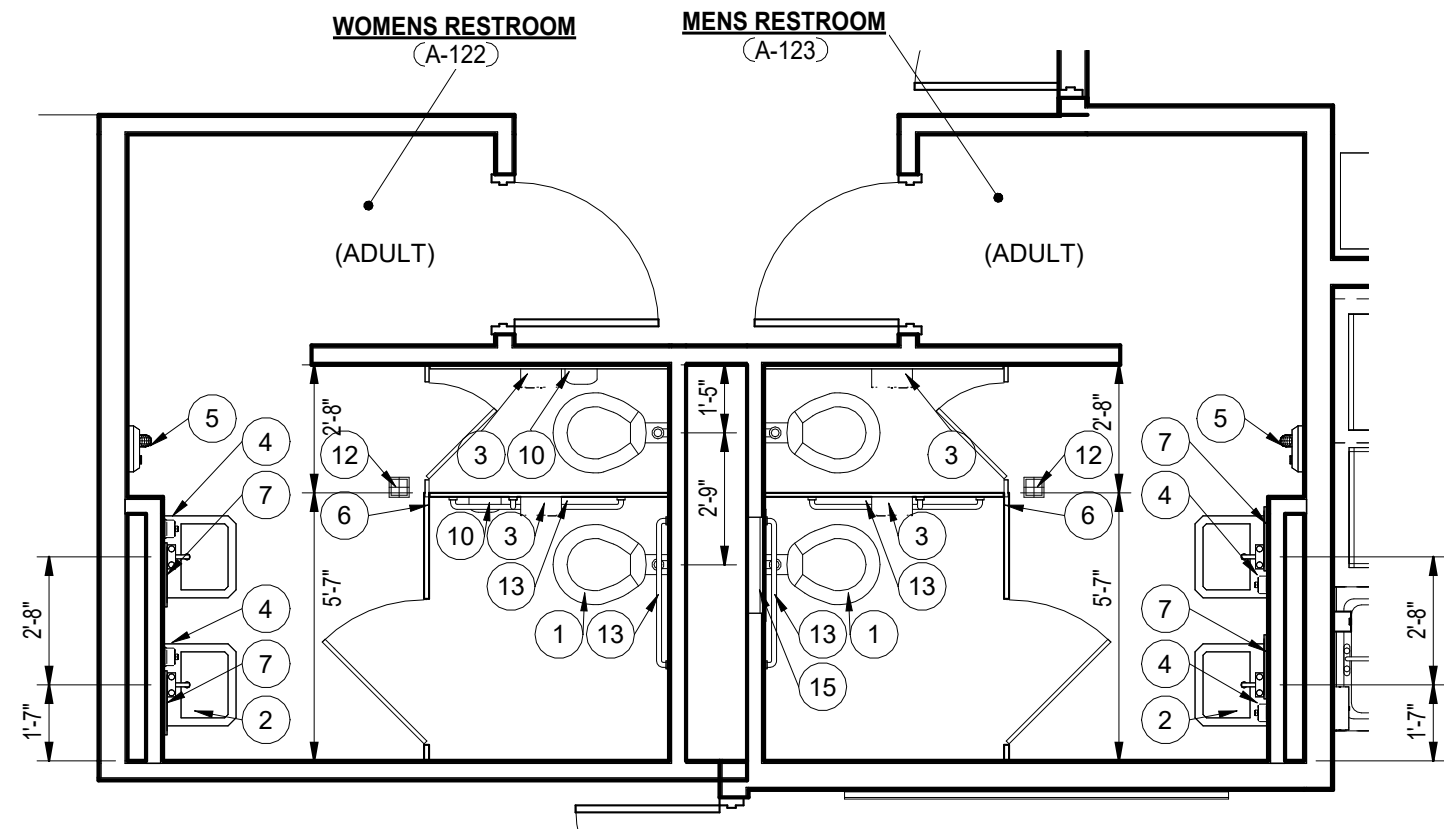
PLAN NOTES:

- 1 ACCESSIBLE FACILITIES. 1 A-710
- 2 ACCESSIBLE FIXTURE (LAVATORY/URINAL), SEE PLUMBING DRAWINGS.
- 3 TOILET PAPER HOLDER. (CFCI)
- 4 SOAP DISPENSER. (OFCI)
- 5 AUTOMATIC ELECTRIC HAND DRYER. REFER TO ELECTRICAL DRAWINGS FOR POWER CONNECTION.
- 6 TOILET PARTITION.
- 7 3'-4" W x 2'-6" H MIRROR. AD-1
- 8 NOT USED
- 9 SHOWER ROD AND CURTAIN
- 10 FEMININE NAPKIN DISPOSAL.
- 11 PAPER TOWEL DISPENSER. (OFCI)
- 12 FLOOR DRAIN. REFER TO PLUMBING DRAWINGS.
- 13 NOT USED.
- 14 ACCESSIBLE SHOWER. 2 A-710
- 15 24"x24" ACCESS PANEL WITH TOP AT 5'-4" ABOVE FLOOR
- 16 SHOWER THRESHOLD. 3 A-710
- 17 INSTALL WALL SPLASH GUARD BELOW ELECTRIC HAND DRYER. MOUNT TOP 3" BELOW BOTTOM OF HAND DRYER.



1
A-710
1/2" = 1'-0"

ACCESSIBLE FACILITIES



5
A-710
1/4" = 1'-0"

ENLARGED RESTROOM PLAN

4
A-710
1/4" = 1'-0"

ENLARGED TOILET ROOM PLANS



GIBALTAR
DESIGN
ARCHITECTURE • ENGINEERING • INTERIOR DESIGN

PROJECT:

**ALTERNATIVE
LEARNING
CENTER
ADDITION AND
RENOVATION**

Tippecanoe School Corporation

2241 Old Romney Rd, Lafayette, IN
47909

CONSTRUCTION DOCUMENTS

GIBALTAR DESIGN

9102 N. Meridian St., Ste. 300
Indianapolis, IN 46260
Homepage: www.GibraltarDesign.com
Email: info@GibraltarDesign.com
Phone 317.580.5777 Fax 317.580.5778

PROJECT

25-148

DATE

07/09/2025

COORDINATED BY

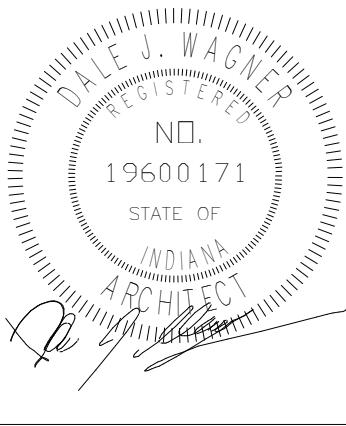
GW

DRAWN BY

RGH

CHECKED BY

GW



COPYRIGHT NOTICE:

THE CONCEPTS, DESIGNS, PLANS, DETAILS, ETC., SHOWN ON THIS DOCUMENT ARE THE PROPERTY OF GIBALTAR DESIGN AND WHERE CREATED FOR USE ON THIS SPECIFIC PROJECT. NO PART OF THIS INFORMATION SHALL BE USED BY ANY PERSON OR FIRM FOR ANY PURPOSE WITHOUT THE EXPRESS WRITTEN CONSENT OF GIBALTAR DESIGN. THE OWNER MAY RETAIN COPIES FOR INFORMATION AND REFERENCE IN CONNECTION ONLY WITH THIS PROJECT.

REVISIONS

MARK	DATE	ISSUED FOR
AD-1	07/22/25	ADDENDUM #1
AD-3	08/01/25	ADDENDUM #3

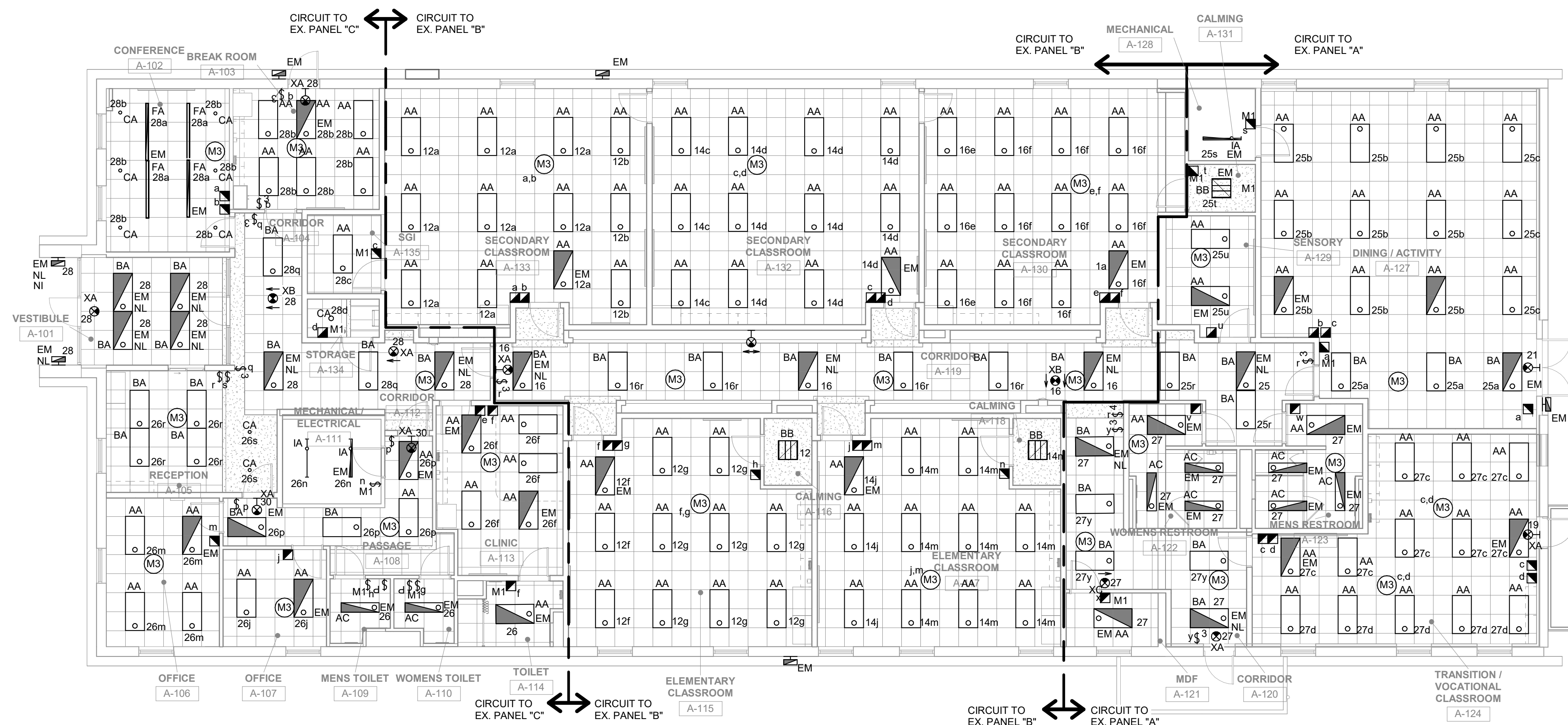
DRAWING
ENLARGED TOILET ROOM
EQUIPMENT PLANS

PROJECT
ALTERNATIVE LEARNING CENTER
ADDITION AND RENOVATION

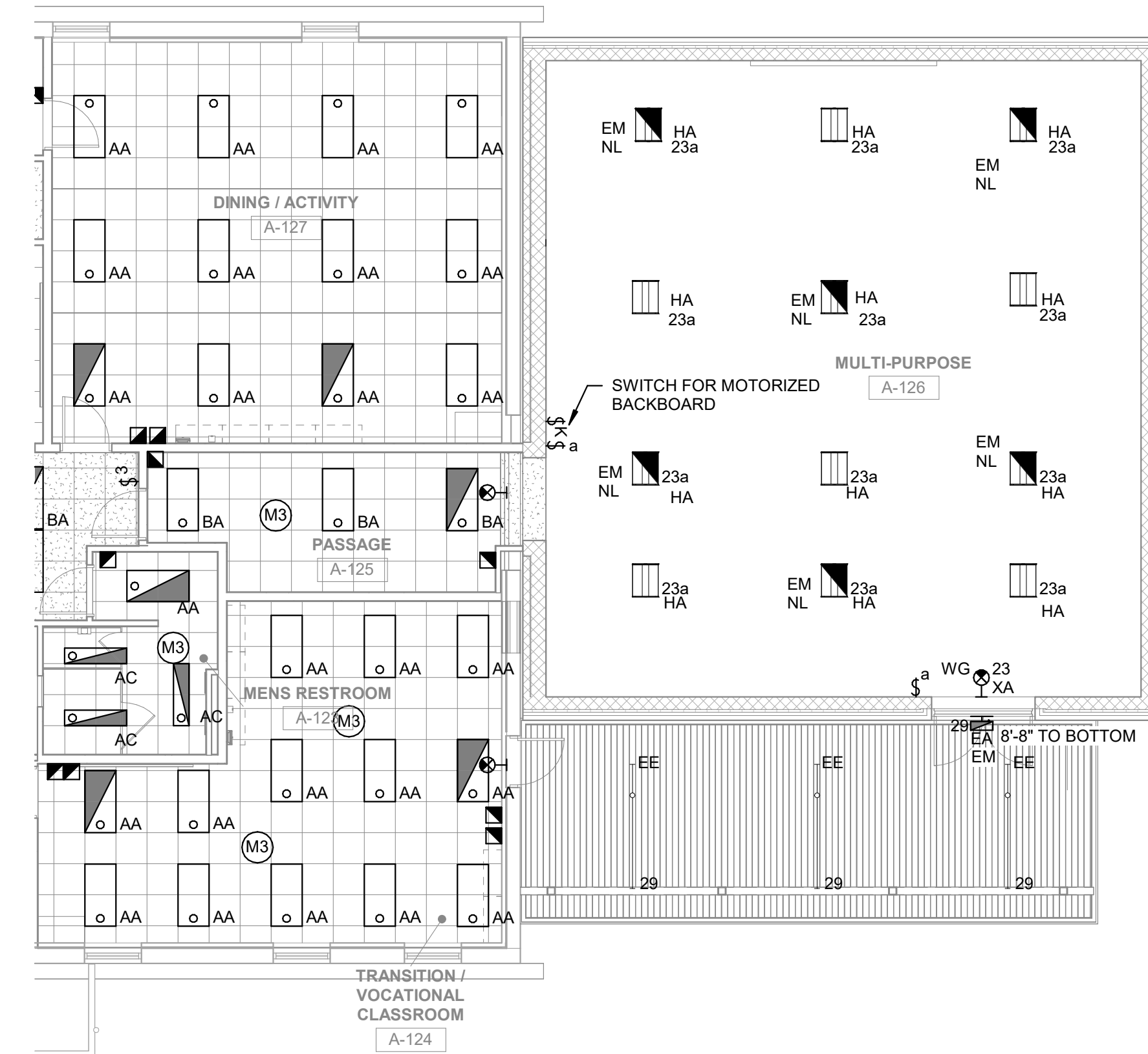
© GIBALTAR
DESIGN

SHEET

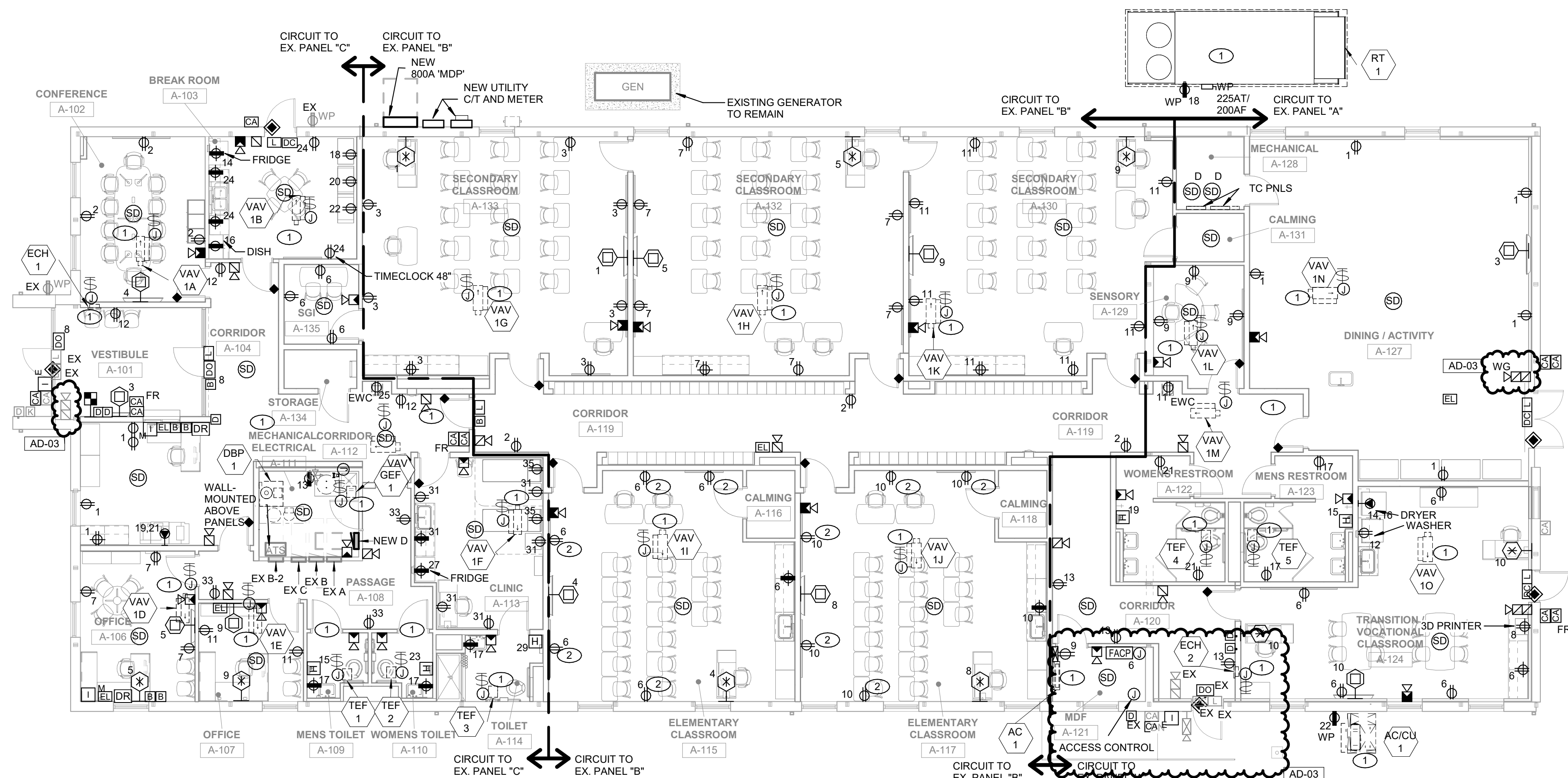
A-710



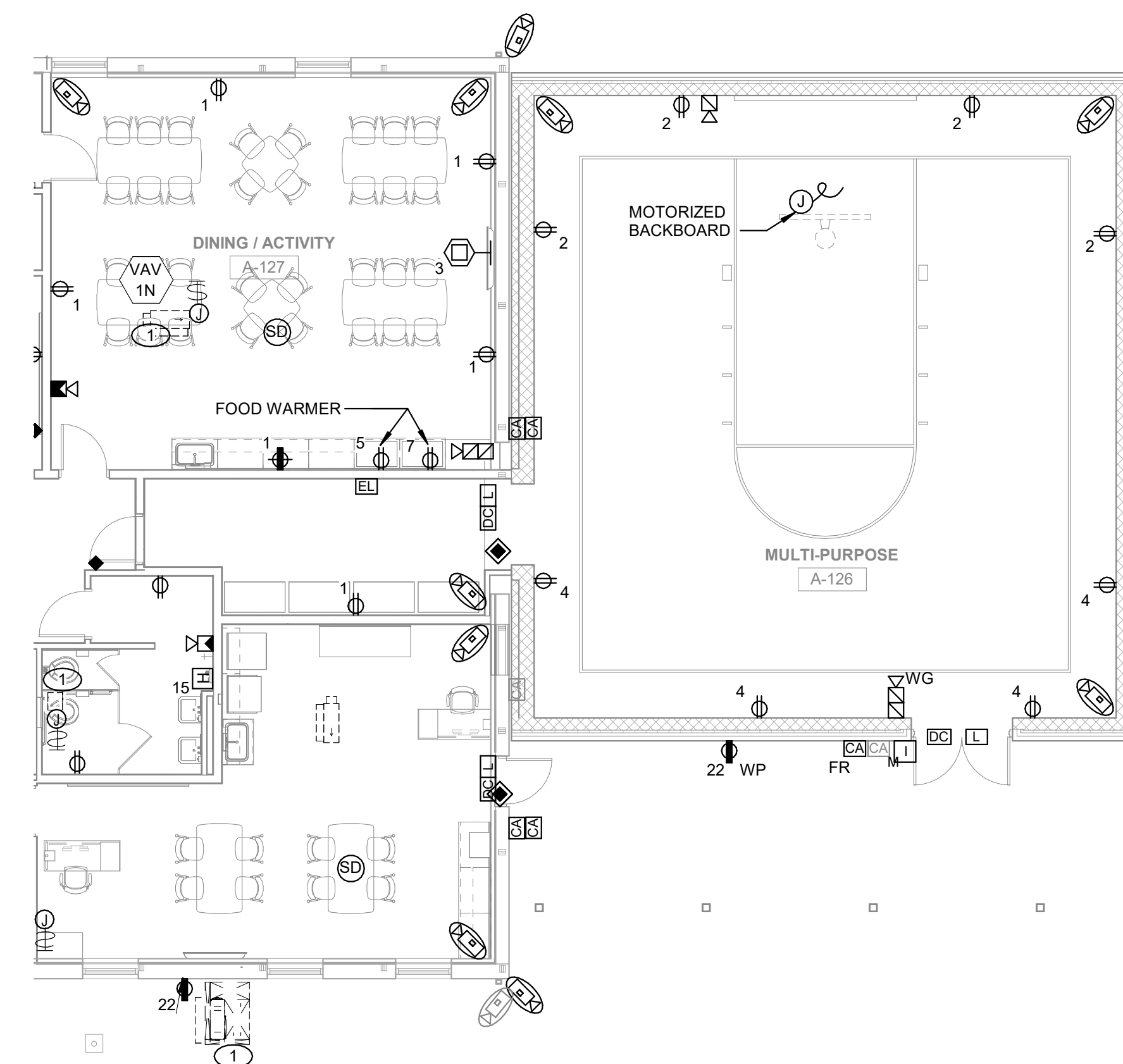
2 ELECTRICAL LIGHTING FIRST FLOOR PLAN
E-101 1/8" = 1'-0"



4 ELECTRICAL LIGHTING FIRST FLOOR PLAN - ALTERNATE BID
E-101 1/8" = 1'-0"



1 ELECTRICAL POWER FIRST FLOOR PLAN
E-101 1/8" = 1'-0"



3 ELECTRICAL POWER FIRST FLOOR PLAN - ALTERNATE BID
E-101 1/8" = 1'-0"

- SHEET NOTES**
- EXISTING MECHANICAL EQUIPMENT TO BE DEMOLISHED. REMOVE EXISTING WIRING BACK TO EXISTING BRANCH PANEL.
 - DUPLEX RECEPTACLES IN ELEMENTARY CLASSROOM TO BE 120V-20A SPECIFICATION GRADE AFCI TAMPER RESISTANT DUPLEX RECEPTACLE - (MOUNTED 18" A.F.F. OR AS NOTED) (HUBBELL #AFR20TR OR EQUAL); UNLESS NOTED OTHERWISE.



GIBRALTAR
DESIGN

ARCHITECTURE • ENGINEERING • INTERIOR DESIGN

MILLIES
ENGINEERING
(719) 524-4400
www.milliesengineeringgroup.co

PROJECT:

**ALTERNATIVE
LEARNING
CENTER
ADDITION AND
RENOVATION**

Tiptecanoe School Corporation

2241 Old Romney Rd, Lafayette, IN
47909

GIBRALTAR DESIGN

9102 N. Meridian St., Ste. 300
Indianapolis, IN 46260
Homepage: www.GibraltarDesign.com
Email: info@GibraltarDesign.com
Phone 317.580.5777 Fax 317.580.5778

PROJECT

23-148

DATE

07/09/2025

COORDINATED BY

SM

DRAWN BY

CJ

CHECKED BY

DJ

COPYRIGHT NOTICE:

THE CONCEPT, DESIGN, PLANS, DETAILS, ETC. SHOWN ON THIS DOCUMENT ARE THE PROPERTY OF GIBRALTAR DESIGN AND WERE CREATED FOR USE ON THIS SPECIFIC PROJECT. NONE OF THIS INFORMATION SHALL BE USED BY ANY PERSON OR FIRM FOR ANY PURPOSE WITHOUT THE EXPRESS WRITTEN CONSENT OF GIBRALTAR DESIGN. THE OWNER MAY RETAIN COPIES FOR INFORMATION AND REFERENCE IN CONNECTION ONLY WITH THIS PROJECT.

REVISIONS

MARK DATE ISSUED FOR

AD-01 07/23/25 ADDENDUM NO. 1

AD-02 07/30/25 ADDENDUM NO. 2

AD-03 08/01/25 ADDENDUM NO. 3

DRAWING

ELECTRICAL FIRST FLOOR

PLANS

PROJECT

ALTERNATIVE LEARNING CENTER

ADDITION AND RENOVATION

© GIBRALTAR
DESIGN

SHEET

E-101

